

# Village & Valley

**AUTUMN 2019**

The magazine of the  
Rowlands Castle Association



# AQUA

## KITCHENS & BATHROOMS



**Specialists in bespoke design**

Excellent Quality | Superb Service | Great Value

CALL NOW FOR A FREE HOME VISIT

**023 9246 6007**

Showroom - 18 Elm Grove Hayling Island PO11 9EF





# Village & Valley

The magazine of the  
Rowlands Castle Association

## AUTUMN 2019

### CONTENTS

5	Message from Chair
6	Parish Council News
8	Hampshire County Council
9	East Hants District Council
11	Neighbourhood Plan
12	Community and RCA events
14	Village Fair report
14	We need you
16	St Huberts
18	St Huberts restoration
20	RC Heritage Centre
22	Gardening Club
24	Painting Society
27	RVS
30	St John's
31	Woman's Institute
33	Church on the green
34	Staunton Park
36	The centre spread
38	Local talent
40	Community
45	Good Neighbours
50	Environment
51	South Downs National Park
52	Health and Wellness
56	Science thoughts
57	Cricket
58	RC Golf Club
62	Further afield
68	Numbers to know
69	The RCA

---

The village magazine is published three times a year by the RCA. The aim of the Association is to conserve the character of Rowlands Castle, to provide a channel of communication on matters of local interest and to enhance the life of the village.

## / HOW TO CONTRIBUTE

The village magazine depends upon your contributions. If you wish to submit material for a future issue please follow the guidelines as set out below:

- Contributions should be between 200-300 words and you should provide at least one image (max 10MB) to accompany your article.
- Please provide your image(s) as separate email attachments, not as part of a Word doc.
- Please send your copy/text as a 'Word' file or by email.
- Please **DO NOT** paste photos into a Word doc.
- Please **DO NOT** 'design' your contribution in Word or any other software.

**PLEASE NOTE** the deadlines below:

**SPRING issue: 18th March**  
**SUMMER issue: 18th June**  
**AUTUMN issue: 18th October**

**PLEASE BE AWARE:**

*Due to print deadlines late submissions might not be considered for publication.*

## / ADVERTISE IN THIS MAGAZINE

The village magazine is funded entirely by advertising. If you would like to promote your business or services and advertise on these pages please contact Mark Dombey on the address below:  
[ads@rowlandscastle.com](mailto:ads@rowlandscastle.com)

## / THE GRAPEVINE

Grapevine is the village messaging service that sends out emails to those that have signed up about events and important information connected to the village.

To sign up, send a blank email to:  
[grapevine@rowlandscastle.com](mailto:grapevine@rowlandscastle.com)

To post a message to the Grapevine send your email to [info@rowlandscastle.com](mailto:info@rowlandscastle.com)

## / COVER PICTURE

Harvest fields near Idsworth House

## / YOUR RCA COMMITTEE 2018/19

Helen Penfold (Chair)  
[chair@rowlandscastle.com](mailto:chair@rowlandscastle.com)  
02392 413233  
07557 276242

Martha Dombey (Treasurer)  
[treasurer@rowlandscastle.com](mailto:treasurer@rowlandscastle.com)  
9241 0030

Sue Leonard (Secretary)  
[secretary@rowlandscastle.com](mailto:secretary@rowlandscastle.com)  
9241 2108

Gordon Charlesworth  
9241 3865

Sue Morrison  
07795 566090

Mary Sinclair  
07885 583738

Rodney Duggua  
075050 42723

Ben Brittain  
9241 3043

June Halford  
9241 2674

Mark Dombey (Webmaster)  
[webmaster@rowlandscastle.com](mailto:webmaster@rowlandscastle.com)  
92410030

Kelvin Schäfli (Magazine editor)  
[editor@rowlandscastle.com](mailto:editor@rowlandscastle.com)

## RCA ONLINE

[www.rowlandscastle.com](http://www.rowlandscastle.com)

[www.facebook.com/  
rowlandscastleassociation/](https://www.facebook.com/rowlandscastleassociation/)

ksphoto.co.uk



## LETTER FROM THE CHAIR

*Helen Penfold*

I would like to be writing this, saying how good it was that we could hold the fireworks last night, but in reality, I am feeling sad that we have had to postpone last night's firework display until next week, the 9th. (I am hoping that by the time you read this, there will have been a successful fireworks display) No one remembers having to postpone the fireworks before, due to bad weather, during its forty year history. We had been watching the weather forecast for a few days, and we knew that strong winds were forecast for Saturday the 2nd. We knew that the wind was due to drop sometime on Saturday evening, but we could not be sure that this lull would come soon enough for the fireworks to be let off safely. At 9am on Saturday morning, our firework provider, Selstar rang me and we agreed that the safest option was to postpone the fireworks.

It seems particularly sad to have had to postpone the fireworks this year, when so much effort had been put in to creating the second exit from the recreation ground, to meet current health and safety guidelines. Creating this exit has proved to be a much bigger challenge than the parish council and the RCA could ever have imagined. But it is done and the second exit is now in place. Thank you to Merrid for doing a great job and many thanks to everyone who has contributed to our appeal to help with the funding. The Parish Council owns the recreation ground but the RCA committee puts on the firework display. The parish council has been very supportive towards the RCA and our request for a second exit and they are sharing the costs of the exit with the RCA, together with a contribution from our EHDC councillor's community fund and some 'development' money. Our recent quiz night raised £1,200 which will also go towards funding for the second exit.

Hopefully there can now be many more firework displays for year to come in Rowlands Castle.

Please come and join us on the RCA committee if you have just a few hours to spare each month. It's a great way of getting to know people in the village and feeling a bit more involved. Please email me if you would like to know more. We are a friendly group and we are always pleased to welcome new members on to the committee.

Best Wishes,

Helen Penfold  
chairman@rowlandscastle.com  
07557 276242





# WHAT HAS THE PARISH COUNCIL BEEN UP TO?

*Lisa Walker*

*Clerk to Rowlands Castle Parish Council*

## General

First, we welcome Jonathan Edwards who was co-opted onto the Council in time to attend his first Meeting in September. His arrival means the Council is now back to full complement, having been left with 2 vacancies after the elections in May.

The Parish Office continues to be kept very busy dealing with a variety of residents' comments and enquiries, all of which are reported to the monthly Council Mtgs. The report for July and August (in the past considered to be 'quieter' months) ran for 7 pages! Councillors and staff have also attended a variety of meetings and training events over the last 4 months including Butser Community Partnership, East Hants Association of Parish & Town Councils, Hampshire Branch of the Society of Local Council Clerks, an SSSEN Distribution Stakeholder Workshop and SDNPA Town & Parish Council Workshop. Attendance at these events helps to keep councillors and staff up-to-date with local government legislation and issues, and also provides useful opportunities to share experiences with other parish councils.

The Parish Office is working on a new on-line Asset Register which, once completed, should allow residents to view all such assets – be they land, buildings, trees, benches etc. Residents will then be able to check whether an asset belongs to the Council before reporting any issues with it.

RCPC's new approach to its agenda format for its meetings is working well in ensuring the main items requiring a decision are dealt with towards the beginning of the meeting whilst minds are at their 'freshest'.

## The Latest on Traffic Calming Measures

Several Council members and staff met with a Hampshire Highways officer in August to consider

further traffic-calming proposals in the Parish under Hampshire County Council's Community-funded Initiative. This allows local organisations such as RCPC to fund minor traffic calming and pedestrian safety measures, with the works being advised upon, designed and carried out by HCC contractors. Investigations will be focused on Durrants Road and on towards Manor Lodge Road, on Woodberry Lane and in Finchdean. We await more detailed recommendations and proposals from Hampshire Highways before making further progress.

The Council also updated its 2016 Traffic & Road Safety Review which was then submitted to Hampshire Highways to inform the spending of some £500,000 in developers' transport contributions which are due to be spent in the Parish. At the beginning of September, several Council members and staff met with a Hampshire Highways officer to discuss a scheme for the spending of such funds and to offer the Council's help in such matters. We await further developments.

The Parish continues to benefit from the efforts of the local Speedwatch Team, which operates from locations approved by the Police. In conjunction with Clamfield and Horndean Parish Councils, we have recently granted funds to allow the Team to purchase new, more sophisticated equipment. The Team really needs more volunteers from this Parish so if you can spare a few hours a month, please contact the Parish Office for further details.

## All go for the 2nd, Emergency-only Access way and other Rec Ground Matters

After many months of hard work, the Working Group concluded the construction of an access way was feasible, recommending it be located at an alternative location nearer the main entrance. After reviewing several comparative quotes, the Council appointed a local firm, Merrid Ltd, to undertake the works on the

condition they were completed in time for the RCA's Firework Display on 2 November. The necessary approvals were obtained from the Safety Advisory Group, EHDC's Arboriculture Dept and Hampshire Highways. The Council has recently heard its application for funding for developers' contributions towards the works, has been successful with the rest of the costs being funded jointly by the Council and Rowlands Castle Association, with a contribution from D Cllr Malcolm Johnson's Community Fund.

Elsewhere at the Rec, the aerial cableway is finally working again after being out of action for many months, which was frustrating for all concerned. This was due to a delay in supply of some vital replacement parts. The 2nd access way works will necessitate some 're-jigging' of the Play Area but without any loss of major equipment. An external drinking water fountain will be installed soon at the Pavilion to allow users to drink and refill multi-use water bottles and discourage the use of single-use plastic bottles, especially during sports events. We are also looking into installing recycling bins at the Rec to minimize general waste. In the long-term, we are also investigating whether to appoint a Recreation Ground Manager with a view to them managing matters like those listed above together with any works undertaken with developers' contributions allocated for the Rec.

### **Trees & Rowlands Copse**

The recent Tree Survey, undertaken by Council's qualified Arboriculturalist, did not show up any major concerns with the trees that are Council's responsibility. He also conducted a thorough review of Rowlands Copse adjacent to the King's Meadow Estate, and made recommendations thereon. Council will act upon all recommendations in order of priority, starting with the felling of a few trees in the Copse before investigating the revival of the pond and clearing of a narrow strip around the edge.

### **What else is happening?**

The Council has been consulted on the South Downs National Park Authority's plans to install 'gateway' signage on Finchdean Road to mark the boundary of the Park. Some of you may have already seen similar signage at Lavant or elsewhere that is part of a pilot scheme.

Both the War Memorial and King's Stone will be cleaned by a local stonemason, Stonecrest, in time for this year's Remembrance Sunday. Having obtained all the necessary permissions, five names will also be added to the Memorial to commemorate those fallen who, for various reasons, were not included on the Memorial originally.

A bench has recently been installed at the south-western end of The Green to replace 2 previous ones. The dedications from both will be included on the new bench for posterity. The bins around The Green are also due to be repainted and missing plaques replaced.

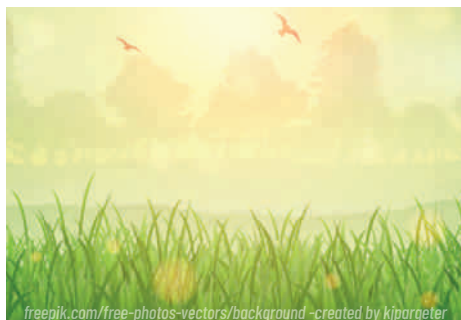
After its previous involvement in the old process, Council is also meeting soon with EHDC to review the new arrangements for the allocation of some developers' contributions.

Many thanks to all those who took the time and trouble to visit one of the drop-in events and/or respond to EHDC's Local Plan: Large Development Sites Consultation. We had endeavoured to publicise this as much as possible and this Council's own response can be viewed on our website.

### **A Regular Plea!**

Finally, please make time to read the minutes of the monthly Council meetings if you want to keep up to date with what's going on in the Parish – see the Council's website and/or local noticeboards.

Our website also contains lots of information on the work of the Council as well as local events and history. If there's a particular event you'd like promoted on the website and/or on the Parish Council's Facebook page, please let us know.



freepik.com/free-photos-vectors/background - created by klpargeter

## ACTIVITY UPDATE

Marge Harvey

It seems along time since I reported to you the last time, but in February our lovely daughter passed away and everything really passed me by for some time. I am sure that all will forgive me for not sending in a report last time.

This year has been very busy for me, as since I started going to meetings and site visits, I have given up my chairmanship of the Autism Board as I find it too close to home at the moment but I still support in my work. My membership of the Health and Social Care committee becomes more and more difficult because this year we have to save £80 million across the board and my committee was already at breaking point, but our leader has asked for extra money to help with Social Care.

As a member of the Portsmouth Hospital Trust Scrutiny Committee I have been able to ask some very pointed questions about people's operations being cancelled and was told that if a persons operation is cancelled then they should get the next available slot. You and I both know that that doesn't always happen and I would like for you to e mail Mark Cubbon, who is the chief executive and ask why this hasn't happened and I hope that something will be done to sort it out. I have to say that the more e mails he receives, that it may focus his mind. I will ask him at our next meeting if he has received e mails about operation being cancelled.

Locally I have asked that all drains are cleared, but they may have to do it more than once as the leaves still haven't come off the trees yet. So, let's hope that it will be done soon because with all of the rain the road are becoming flooded as the drains are full of soil etc.

You will have noticed that Durrants Road has been resurfaced, at last! They still have to write slow on the

piece just past the garage, but I have been assured that it will be done. I must admit that it is a much smoother ride, but I am hoping that the crazy drivers respect it more than before. I have contacted the police and raised the fact of speeding along that piece of road, but as yet they say they cannot do anything about it because of lack of people to do this!

To the same end I have written to Flick Drummond, who is the new Police and crime commissioner elect for us as she contacted me to give her any input. That was a silly thing to do!! She received a very long e mail with my suggestions.

Links Lane was resurfaced not too long ago and I must say that I didn't request that to be done, but I did request that the pavements were in a poor state on parts and asked for them to be resurfaced. I did contact Operation Resilience, who is the department that deals with this work and asked them to investigate who requested it to be done but as yet I haven't received a reply, but I did also complain about the lining in Links Lane as it was left for longer than I thought that they should have and low and behold it was done within 2 days!!

I am still asking for the lining to be redone throughout the village, but especially in the Fairway from the recreation ground as the lines have almost disappeared and as football has resumed, it becomes dangerous for people using the Fairway and people coming from the Recreation ground.

As someone who uses the Recreation Ground often to walk my dog, could I please ask others using it to dog walk, to please pick up the poo from their dog. I do pick it up for mine but also if I see it, I also pick up for others and it really has become a problem again and we really do not want to loose this privilege, so please remind people if you see this happening.

Well I think that I should end this report, but please come and see me at my surgery on the first Thursday of the month and have a cup of coffee or tea with me if you need to talk about anything that I can help with. All that is left is to wish you all a very happy Christmas and a very happy and healthy New Year.

Kind regards to you all.



# NOTES FROM EAST HAMPSHIRE DISTRICT COUNCIL

**Malcolm Johnson**

*Ward Councillor for all residents of Rowlands Castle, Finchdean and Idsworth*

Activity at East Hampshire District Council has continued at a brisk pace since I was returned in May. Many of you will know that we now have an opposition at the Council, the first time in around ten years, which made for some interesting meetings at the beginning of the Council year. However as new members settled into their respective roles on various committees' things calmed down and we're now in quite a productive period of work collectively.

We have all been subject to more planning training as this is such a dynamic topic and there is so much to grasp for us lay members who sit on the planning committee. Even the professional planning officers are always getting updates as the government issues more changes to the system nationally. There are a number of topics to update you on so as planning is often a major topic in my email in box, I'll start with that.

I mentioned in my summer notes that work continues on the draft Local Plan following the public consultation and now you will have seen information about a more recent public consultation on what are termed "large sites". These are parcels of land within the district that can take in excess of 600 units and there are ten such sites identified across East Hampshire outside The Park. The purpose of that consultation, which has just closed as I write, was to gather local views from the public on the viability and suitability of those proposed sites as part of the overall Local Plan so as to meet future housing and development needs through the life of the Plan to 2036. That is not to say that they will all be



approved and built, the consultation is purely a means of gathering local knowledge to provide a reliable information base for decision making. The results of the consultation will provide two sites which will be included in the draft plan that will be put before a Planning Inspector in early 2020.

On a related subject you will be pleased to read that almost £750,000 has been distributed by EHDC from Developer's Contributions that arise from the various developments that have taken place in the district and Rowlands Castle has been a recipient of some of this funding. The Parish Council, the Rowland Castle Scouts, the parish hall and the United Reform Church have all benefited from this pot of money. By the time you read this issue of Village and Valley the annual fireworks display will have taken place. I'm pleased to say that, along with many others, I was able to provide funding to the Parish Council to enable them to create the emergency exit required for this popular annual event which provides so much for our community through the RCA. On the subject of my councillor grant fund, some of which I used towards the recreation ground emergency exit costs, I still have funds available in this financial year so if any organisation or group is looking for money for a local project just go to the EHDC web site and download the form and send it to me. This is money for our local community so please don't lose the opportunity while it's there.

Some of you may have seen activity by Portsmouth



## RECYCLE YOUR MAGAZINE

*This magazine is printed on FSC (FOREST STEWARDSHIP COUNCIL) approved paper stock which is sustainably sourced and fully recyclable.*

## / EAST HANTS DISTRICT COUNCIL

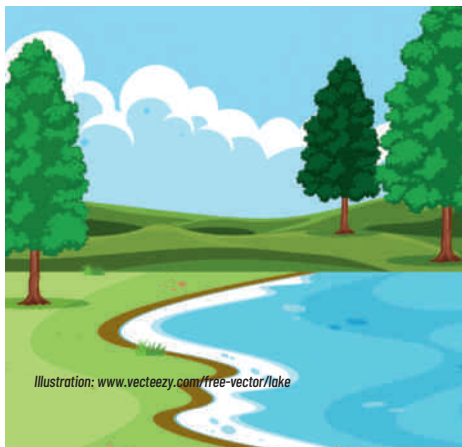
### NOTES FROM EAST HAMPSHIRE DISTRICT COUNCIL

*Continued from previous page*

Water Company in Gypsies Plain near Staunton Country Park in recent weeks, well that's a new water main being laid to replace an old leaking pipe. However, you will see further work by the company in coming weeks as they start test bore holes across the whole area of the new Havant Thicket Winter Storage Reservoir site, for which they now have funding, in preparation for their planning submission to Havant Borough Council in September 2020. The application will go to Havant BC as they are the lead planning authority for the project though EHDC will also be involved. You will know by know that the new waste collecting service has started and yes there have been some hiccups, but the new contractor and the EHDC team are working hard to sort the bumps, if you have a missed bin collection please call 01730 234295 to report it to EHDC.

And finally, as I always end my notes, please remember that on the first Thursday of each month along with our Hampshire County Councillor Marge Harvey and a representative from the Rowlands Castle Parish Council, I can be found in the village café between 1100 and 1200. So, if you have something you wish to raise, we will be there.

I can also be contacted at EHDC via email:  
[malcolm.johnson@easthants.gov.uk](mailto:malcolm.johnson@easthants.gov.uk)  
or by phone 92412096.



*Illustration: [www.vecteezy.com/free-vector/lake](http://www.vecteezy.com/free-vector/lake)*

# ROWLANDS CASTLE NEIGHBOURHOOD PLAN PROGRESS REPORT

*Ian Young*  
*Steering Group Chairman*

The Steering Group (SG) continues to make good progress in developing the draft policies for the Rowlands Castle Neighbourhood Plan (RCNP) taking into account comments received in response to last year's Housing consultation questionnaire sent to all residents in the Parish. The SG continues to work closely with East Hampshire District Council (EHDC) and the South Downs National Park Authority (SDNPA) to ensure that the RCNP is consistent with the Local Plan (LP) of each authority. The SDNPA LP was adopted in July while a second public consultation on the EHDC LP has recently been held, seeking comments on ten possible sites for major housing development, two of which are expected to be included in their LP. One of the possible sites would be an extension of the currently approved Land East of Horndean development, and would be within the Rowlands Castle Parish boundary. The SG will continue to monitor, and where necessary comment on these possible development proposals which will result in a later completion date for the EHDC LP.

The SG intends further consultation to seek your views about the type of new development that you need in the Parish during the next planning period - from 2020 until 2036 - so that they can be taken into account in the development of the Neighbourhood Plan. In addition to comments already received from residents, the SG welcomes comments from groups, organisations and businesses on any particular needs for and/or views on future developments in the Parish that would be of assistance to them. Please send comments to the Parish Office contact details below.



The Steering Group's aim remains to develop the Rowlands Castle Neighbourhood Plan to meet its agreed 'Vision':

'To conserve and enhance the Parish of Rowlands Castle as an attractive community, whilst maintaining its separate identity, character and distinctiveness.'

The Group continues to meet regularly to develop the Plan, if you would like to join the SG to contribute in this, or any other way, or if you would like further information on development of the Neighbourhood Plan, or to forward comments on future development needs, please contact Gill Whatley at the Parish Office - by phone (02392 413044) or email ([projects@rowlandscastlepc.org.uk](mailto:projects@rowlandscastlepc.org.uk)).



## / COMMUNITY EVENTS

### RCWI

7:30pm  
Second Monday of each  
month. No meeting in August  
Parish Hall, Links Lane

NOTICE  
BOARD

11. 11. 11.

### REMEMBRANCE SUNDAY 2019

Sunday November 10th.

Armistice Day is Monday 11th November. The Union Flag on the Village Green will be lowered at 11 o'clock for the 2 minute silence. The 11th hour of the 11th day of the 11th month.

Please join with others for this short ceremony to remember those of all generations who have served their country.

### RVS LUNCH CLUB

12:00 pm - 1:30 pm, every Thursday, Parish Hall  
Contact: Carol Milford 02392 412321

### WOMANS FELLOWSHIP

2:00 - 4:00 pm  
First and third Tues afternoon of the month.  
No meeting in August.  
St John's Church centre.

### DRIFTWOOD & FRIENDS FOLK CONCERT

Raising money for Stone Pillow (helping the homeless).

Rowlands Castle's own Driftwood & Friends will be in concert again Friday December 6th  
St John's Church Hall 7.30.

Driftwood perform all their own material, and their mystery friends (also from the village) will be performing a mix of more well known songs.

£5 on the door - any extra contributions welcome - b.y.o. wine etc for the interval.

Contact david@mtchl.com

### CHRISTMAS FAYRE

30 november

10am -3pm  
Parish Hall, Rowlands Castle

Enjoy a wide range of crafts including woodwork, paintings, jewellery, glass-work, ceramics, printings, blacksmiths, textiles, food & more.

Admission free.

### GARDENING CLUB

Spring Show Saturday March 28th St John's Church Hall 2 - 5pm entries in the morning - all welcome.

Entry forms available in the village or contact Gardening Club - RCA website.

## MAYDAY PICNIC & BBQ ON THE GREEN

**FRIDAY 8TH MAY 2020**

**12:00 - 2:00 pm**

Fun for all, including music by the Blendworth Brass Band. BBQ on the forecourt of the Fountain Inn. Collection in aid of the Rowan's Hospice.

Contact: [secretary@rowlandscastle.com](mailto:secretary@rowlandscastle.com)

## RCA QUIZ NIGHT

**Date to be confirmed**

**OCTOBER 2020**

**Parish Hall**

Always popular, come for the fun, food and prizes

Contact: [secretary@rowlandscastle.com](mailto:secretary@rowlandscastle.com)

## CHILDREN'S CHRISTMAS PARTY

**SUNDAY 15TH DECEMBER 2019**

**11:00-1:00 pm**

**Parish Hall**

The annual RCA Children's Christmas Party in the Rowlands Castle Parish Hall. For children 0-6 yrs (with an adult). Magic Mikey entertainment, lots to eat and Father Christmas. £1 per child and a wrapped and labelled present for Father Christmas to give. Only open to children of the residents of Rowlands Castle.

## LITTER PICKING

Litter Pick on the **last Saturday of each month.**

We meet at the Flagpole on the Green at 10:30am on the Saturday with our own picker sticks, yellow hi viz vests and rubbish bags. Wear garden gloves as well! Key areas covered are The Green, Redhill Road and the Station approach.

Free, bacon buttty afterwards!

We shall send out a reminder for these Litter Pick days via the Grapevine, during the week before.

## FIND OUT WHAT'S HAPPENING IN THE VILLAGE

**SIGN UP TO THE GRAPEVINE**

Grapevine is the village messaging service that sends out emails to those that have signed up about events and important information connected to the village.

To sign up, send a blank email to:

[grapevine@rowlandscastle.com](mailto:grapevine@rowlandscastle.com)



## / VILLAGE FAIR

# VILLAGE FAIR CHAIR'S REPORT OCT 2019

*Grahame Morrison*

*Rowlands Castle Village Fair chairman*

I am very pleased to be able to report that, after the vagaries of last year due to the excessive heat and World Cup clash, this year's fair could not have gone much better. The weather was near perfect and we had so many stall bookings that Kevin Miness had his work cut out to get everyone ready in time. We had very good attendance as usual and it was great to have the kid's games and dog show back on again.

This year cost £21,015 to arrange, with the major expenses being the hire of the marquee for the day, the cost of the children's rides, bar and catering stock purchases, the fees for the evening entertainments, liability insurance, etc.

The Fair Committee were focused even more than usual on the need not only to provide a great day for our fellow villagers and their friends but also to raise money to go towards good causes in the village following the financial challenges arising from last year.

To that aim we once more asked Jonny Arnold to organise the catering with his merry band of local volunteers using barbecues the committee bought this year. They cheerfully provided delicious food for everyone throughout the day and night and raised £1,755 for us.

Again, rather than hire the bar for £850 as in previous years, we built our own this year with Adrian Wilcox acting as chief architect, project manager and carpenter! It certainly looked the part and, being larger, things were slightly less hectic for the (again volunteer) bar staff serving day and night. Advance stocking the bar costs over £5,000 but we still made £2,160 profit. The ability to reuse the bar and the barbecues year on year will be provide ongoing cost savings (and they are also available for other suitable village events upon request).

Ian Oliver also negotiated a generous sponsorship from Aster, who offer affordable shared ownership on properties in Montague Green.

The fair raffle and evening entertainments were arranged by Phil Harvey, The Las Palmas 6, a Madness tribute band, being a huge hit with the evening crowd who raised the roof singing along to such hits as "Our House". The music that starts and rounds off the evening was provided by local supporter "DJ Laurence". The thought and preparation put into his sets was evidenced by his lack of sleep the nights



## VOLUNTEERING OPPORTUNITIES

If you have opportunities for volunteers, or are seeking volunteers, please send us the information.



before! The profit from the ticket sales for the evening contributed £1,740 towards the final numbers.

All the above, combined with the income from the stalls, the 50p's for the kid's rides and the advertising from the RCVF magazine (produced by Steve Pierson) means that this year's fair raised £24,025 which gives a pleasing total profit of £3,010 for everybody's hard work. In the past we have given money to such things as the exercise equipment and children's play area on

the recreation ground, defibrillators for the village, contributions to the Scouts and the local football teams. We have yet to decide where to make donations this year and are open to suitable applications. Please contact us at [rowlandscastle villagefair.org.uk](http://rowlandscastle villagefair.org.uk)

I look forward to seeing you all again at the 2020 fair and finally many thanks to Lisa Walker, our Treasurer, for compiling the accounts (which I have rounded up to the nearest £5).



## ROWLANDS CASTLE HERITAGE CENTRE

We are seeking two more Trustees (legal, financial or surveying skills), members for the Management Working Group (ten meetings a year), a Treasurer, Archivists, researchers and writers. We also welcome attendants for our iconic model railway now on display at Stansted House.

See our guidelines for 'Volunteering Practices':  
[www.rowlandscastleheritagecentre.org.uk/  
volunteering-in-our-community/](http://www.rowlandscastleheritagecentre.org.uk/volunteering-in-our-community/)

Please contact Alan Eysers, chairman RCHC: Tel: 02392 412433 Email: [chair@rowlandscastleheritagecentre.org.uk](mailto:chair@rowlandscastleheritagecentre.org.uk)

## ROWLANDS CASTLE ASSOCIATION

We welcome new committee members and other helpers for May Day picnic, the October Quiz, November Fireworks night, and monthly litter pick.

Please contact Helen Penfold  
[chairman@rowlandscastle.com](mailto:chairman@rowlandscastle.com)

---

## ROWLANDS CASTLE U3A

RC U3A needs volunteers for Committee Members, we hold 9 mtgs per year.  
Please contact Chairman on website  
[www.u3asites.org.uk/rowlands-castle](http://www.u3asites.org.uk/rowlands-castle)

## SIGNIFICANT RESTORATION PROJECT TO THE EAST WINDON COMPLETED

*Andrew Callender*

*Chairman, The Idsworth Church Friends Trust*

*(with additional information from John Bates, Treasurer, Idsworth PCC)*

The sharp-eyed amongst you will have been aware of the building repairs which have been undertaken at St Hubert's Church during the months of July, August and September. The 'little church in the field' has been swathed in scaffolding which could be clearly viewed from either the roadside or the railway carriage.

Back in the summer of 2013, the South and West Walls had been rendered with a lime mortar and then lime washed. Now was the time to limewash these walls again and three coats were applied. The major focus for the work project was the East Wall and Window. For some time, there had been serious concerns about the poor state of the 1913 window frame which had become very rotten. In addition, the condition of the East Wall was deteriorating: for generations, it had been covered in a cement render, thus trapping the moisture within the wall so that it had started to bulge in places.

As well as scaffolding the outer East Wall, the internal wall above the altar also required scaffolding so that the reveals on either side of the window depicting St Peter and St Paul could be safeguarded. The removal of the East window was always going to be a challenge and this work was supervised under the eagle eye of a Wall Paintings conservator who was able to secure the plasterwork. The original glass, including the stained glass roundel depicting the conversion of St Hubert, was carefully removed, retained and cleaned.

Once the window frame had been successfully extracted, the opening was shuttered and the work on removing the cement render to the outer East Wall began.

By early August, all cement render had been removed – a challenging task as the architect had stipulated that only non-impact tools be used in the process. In the end, only a small number of flints needed to be re-grouted.

With the old render stripped back, an interesting feature in the wall was discovered by the architect: set at regular intervals in two layers across the wall were sets of sandstone blocks in an inverted 'U' formation. The architect referred to these as 'Puglestones' and were the supports for the original wooden scaffold poles when the wall was built dating back to at least the time of the 14th Century Wall Paintings.

Once the new window frame was in place, the process of applying the three layers of lime mortar began allowing time for each coat to harden. This was followed by three coats of lime wash. The glaziers returned to install the glass before the final pointing and render around the frame, both inside and out, was completed by the conservator.

The project was made possible through a major grant from East Hampshire District Council's S106 Developers Fund of £50,000 which had been secured by the Idsworth Church Friends Trust. The

Headley Trust and the Hampshire and the Islands Historic Churches Trust contributed towards the East Window. The Idsworth Church Friends Trust provided further funds towards the overall cost of the project.

The buildings project was managed by the Idsworth Church PCC.

During the Patronal Festival Service at St Hubert's on Sunday 13th October, an act of thanksgiving for the restoration of the East Window was conducted by the newly appointed Priest-in-Charge, Rev Vickie Morgan and a plaque was unveiled to acknowledge the contribution of the funding organisations.



## SIGNIFICANT RESTORATION PROJECT TO THE EAST WINDOW COMPLETED

*John Bates*

### **The Porch and Lintel**

As the restoration work on St. Hubert's Church proceeds it has given us a chance to look more closely at the building and reacquaint ourselves with some of its less noticed secrets.

Week after week we pass under the porch way arch with its hand carved oak woodwork and the Latin verse carved by some long-forgotten carpenters' hand. We can never know his name but following in the steps of our Lord he took his chisel and mallet and, probably on site, meticulously engraved the Latin phrase on the lintel.

He may well have not understood the words he carved, given him by a member of the clergy, but he would have heard them in the Latin liturgy maybe without knowing their meaning.

#### ***INTRIOTE PORTAS EIUS IN CONFESSIONE***

I admit I had to look up their meaning, what little Latin entered my schoolboy mind has long since evaporated. I was pleasantly surprised to find I already knew the text well. We know it as the Jubilate Deo or Psalm 100 used in our Matins service. The King James version of course, verse 4:

#### ***Enter Into His Gates with Thanksgiving***

Next time you enter St. Hubert's look up and remember this unknown artisan and give thanks for his craft for unlike many of us his work has given him a sort of immortality.

### **The Scratch, Mass or Tide Dial**

On the corner of the South & West wall of St. Hubert's Church is an often missed, but once important feature. The scratch dial, also known as a Mass or Tide dial was once an important feature of many ancient churches. Unlike a normal sundial these were designed to mark the canonical or prayer hours of the day.

The old English word "tid" was used up until the Norman conquest but was then replaced by the word "Hours"

There are some 3,000 surviving sundials on churches in England and they were common up to the 14th century when many were replaced by mechanical clock but country churches still continued to use them. Their origin is much older than the churches as the Jews were exalted in psalm 119 to praise God seven times a day.

Christian communities followed various local prayer customs until the emperor Charlemagne required his subjects to follow the Roman liturgy and later his son enforced the rule of St. Benedict on all Christian communities.

It was the necessity for the church community to organise its time which led to the use of these sundials, some were quite elaborate with stone gnomon and engraved dial but most of the surviving ones had a simple wooden gnomon and were little more than a scratched dial on the South side of churches usually at eye level.

Here again we cannot know the name of the priest or workman who scratched our sundial and although now redundant and hardly noticed we should still take time to think on the lives of these long-forgotten men and women who attended our church in centuries past.

### **Putlog Holes**

An interesting discovery was made when the old render was stripped off the East wall.

These sandstone blocks would have gone unnoticed had our Architect, Louise Bainbridge, not spotted them.



What, to the untrained eye, appeared to be simply small blocks of sandstone set in the flint wall formed a pattern of six, equally spaced across the East face of St. Hubert's Church. They are in fact the supports for the original wooden scaffolding used when the wall was built, sometime before the 14th century. As the flint wall were too fragile to support the scaffolds weight the blocks were used to give a firm bed for the wooden poles and posts on which the builders could work as the wall increased in height. They are no longer visible as the new Lime Mortar Render covers them.

How proud these builders of centuries past would be to know their work has stood the test of time so well.

### The East Window Roundel

During the removal of the glass from the old window it was noticed that the stained-glass roundel was in need of some re-leading.

This interesting piece of stained glass was presented to St. Hubert's by H.S Goodhart-Rendell, the architect responsible for the last major refurbishment in 1913. It is taken from an Albrecht Durer etching of St Hubert and the stag but most people do not notice the small church in the original etching has been replaced by a picture of St. Hubert's church.

Compare this to the original etching, a copy of which is situated outside the vestry door. A closer look at this will also show that the etching is in fact of St. Eustace and NOT St. Hubert, (although some people think they were one and the same). In this case we know the name of the donor and the Glazier who has restored the roundel to its former glory but unfortunately not the original craftsman.







Registered Charity number 1174495

## UPDATE ON ACTIVITIES

*Alan Evers*

*Chair, Rowlands Castle Heritage Centre*

Well another year nearly over, another season of displaying the Model Railway up at Stansted House drawn to a close. This is the third year we have had the opportunity of the use of the first room on the left as you enter the House's front door. A good size room, where the Model can be seen clearly for one side and the front. We needed it this year, as we had around 5,400 visitors over 95 days, well up on last year. We like to think the increase was due in some part to this year being the 75th anniversary of D-Day, raising the profile of not only the events that took place locally in June, but an awareness of how momentous the occasion was 75 years ago. The model shows a snapshot of life in the Village back then.

Visitors came from far and wide, some keen railway modellers themselves who know of the models, looking to see and compare from their own. It was not until we came to own the model that we realized how popular railway models still are, with numerous exhibitions taking place throughout the year in all places north, south, east and west. There is even a Television program on currently where teams compete to build a themed display over a set amount of time and are judged at the end for the best display. It is amazing how detailed the scenery is with a variety of trains and or other moving parts to tell a story.

2019 being 75 years for us, but, 2020 is an anniversary of large parts of Europe being freed for German rule. This has led to an invitation to exhibit our model at a Railway Museum in Haaksbergen, Holland, the event is titled 'Sporen van de Victorie' Tracks to Victory, celebrating the role that the railway network played in helping the Allies move through Europe and including the part played by our railway system here during the

build-up to D-Day, including Rowlands Castle and the local area. It was to be April but now moved to June. We are carefully considering going, to take part in an historic event and celebrate with our Dutch friends, who like many others in Europe suffered badly during their occupation, is very tempting. We will keep you updated on this project.

Another project the RCHC has been working on for a couple of years now, has not moved any further forward, this being the possible Lease of our Railway Station as a permanent 'home' for the Heritage Centre. The Station has been unused for many years, but is in fairly good condition, with new lighting, wiring, toilets, fire alarms, a small kitchen area. Some money will need to be spent if this goes ahead, to comply with 'Health & Safety' requirements to allow visitors safe access, where we would be looking to have displays of local history, artefacts, memorabilia, pictures, photos, and if possible meetings and talks on local history by the Heritage Centre or others Groups within the village. But dealing with different departments within the Network Rail and South West Railways takes time and several follow up emails or phone calls. Progress has been slow. Another thing to keep you all updated on!

Our Website continues to grow in content, with interviews and profiles of local people some of whom have lived in the village for many years, some remembering D-Day for 'real'. These can be found, along with pictures of local events, buildings, the surrounding area, businesses old and new, reports, such as the Parish Plan and Local Landscape Character Assessment. And of course, the Railway Station and the Model are also featured, with links to a couple of videos of the trains running and an interview

with Peter Goss the model's builder on the day he brought the Model down to us, explaining how and why he built it in the first place.

We are always looking for further items to add to the Website, what do have hidden way you would be happy to share with us? Or would you consent to being interviewed about your recollections of the village during your life time? Photos, newspaper articles, anything you think could be of interest, please do get in touch with our Web Editor, Alan Drinkwater.

During the summer we held a 'Garden Party' by way of a fund raiser, Ania & Charlie kindly allowed the use of their garden, with folk music by our very own duos, Driftwood & Froddy, for which we thank them for their time and talent. The sun was kind to us, some of the W.I. ladies helped cook and prepare cream teas and cakes, big thank you to them. All the local businesses kindly donated Raffle Prizes, big thank you there too.

A 'Full Garden' had a very enjoyable afternoon was had by all. We made over £800.00 all of which, goes towards the up keep of the Model, as with, 'all things mechanical' it needs repairs and general maintenance throughout the year and now before it is packed away for the winter, the rolling stock will be cleaned and oiled, boxed all ready for next year.

We are still looking for a Treasurer, nothing to onerous, we have easy to use software, our end of year account is professionally audited. Please get in touch if you are interested. Plus, about 8 or 9 meetings a year of the Working Group and the AGM.

Contact details:

Alan Eyers, Chair [RCHC chair@rowlandcastleheritagecentre.org.uk](mailto:RCHC_chair@rowlandcastleheritagecentre.org.uk)

Alan Drinkwater, Editor [editor@rowlandcastleheritagecentre.org.uk](mailto:editor@rowlandcastleheritagecentre.org.uk)

[rowlandcastleheritagecentre.org.uk](http://rowlandcastleheritagecentre.org.uk)

[www.rowlandcastleheritagecentre.org.uk](http://www.rowlandcastleheritagecentre.org.uk)







*Andy McIndoe's garden*



*Woolbeding*



## GROWING AND GARDENING AUTUMN 2019

*Dave Mitchell*  
Chairman

**Own Your Village** - your garden doesn't have to stop at the boundary of your property. Those brambles overhanging a footpath, that litter on the ground, those new trees needing watering in their first season - the whole village is your garden.

Another Winter season begins for the Gardening Club, meeting every third Wednesday of the month at The Church on the Green 7.30pm until about 9pm with guest speakers. All welcome, members free, guests £3 including coffee.

The July & August meetings were replaced by daytime garden visits. The first was to Andy McIndoe's garden near Romsey, and the second to Woolbeding near Midhurst. Very popular sunny visits to 2 lovely gardens by coach - so no hassle driving or parking.

For our first meeting on September 18 we had a visit from one of our regulars Ray Broughton - 'Pests & Diseases'. With his wide knowledge of horticulture he is always an interesting speaker including tomato ketchup as the ideal way to clean secateurs. October was 'Plants Which Changed the World' by Rosina Brandon.

November 20 will be a medley of member's talks. December 18 - Christmas Party - members only.

**Spring show next year will be March 28** in St John's church hall. Yet more different categories alongside the familiar ones. All are welcome to enter, not just Gardening Club members.

**New Gardening Club members are always welcome** - especially those moving into a new house and struggling with a 'developer's' garden. Come along to a Wednesday meeting and introduce yourselves to us so we can get to know you, or visit the Spring Show.

Further details David Mitchell (Chairman)  
[david@mtchl.com](mailto:david@mtchl.com) or visit the RCA website  
[www.rowlandscastle.com/](http://www.rowlandscastle.com/)- social & cultural.



## RC PAINTING SOCIETY

*Jan Roblin*

Mr Jennings Wood founded the Rowlands Castle Painting Society in 1970 which next year will celebrate its 50th year. Mr Jennings Wood, a Yorkshireman, lived in Rowlands Castle from 1939 and was an enthusiastic painter since the age of 15. He started his working life as a pupil architect, then electrical engineering, joined the Royal Navy as an electrician and after the First World War he became a draughtsman. He retired from the Admiralty in 1964 and devoted his spare time to painting which was his main hobby. After giving painting classes to the Womens' Institute he conceived the idea of a Painting Society for Rowlands Castle. He used charts to pass on visually the techniques of painting to members of the Society. Using a tape-recorder he could always refer back to the information in talks he gave to the group. Painting exhibitions were even held on the village green in the early days of

Rowlands Castle Painting Society. Mr Jennings Wood was still painting on the morning he died in 1987.

The Society still meets on Tuesdays. Social evenings, demonstrations and painting picnic days out in the summer have been part of the Society since it was founded. They are also very much part of our current programme which can be found on the website <http://rowlandscastlepaintingsociety.co.uk>.

The demonstrations booked for 2020, Tuesday evenings, 7.30 pm – 9.30 pm are

**28th January** Demonstration by artist Sharon Hurst – Winter Landscape

**11th February** Demonstration/Workshop by artist Barry Lester – Drawing

**25th February** Demonstration by artist Roger Dellar – Dance Scene

**10th March** Demonstration by artist L Davies – Woodland Scene

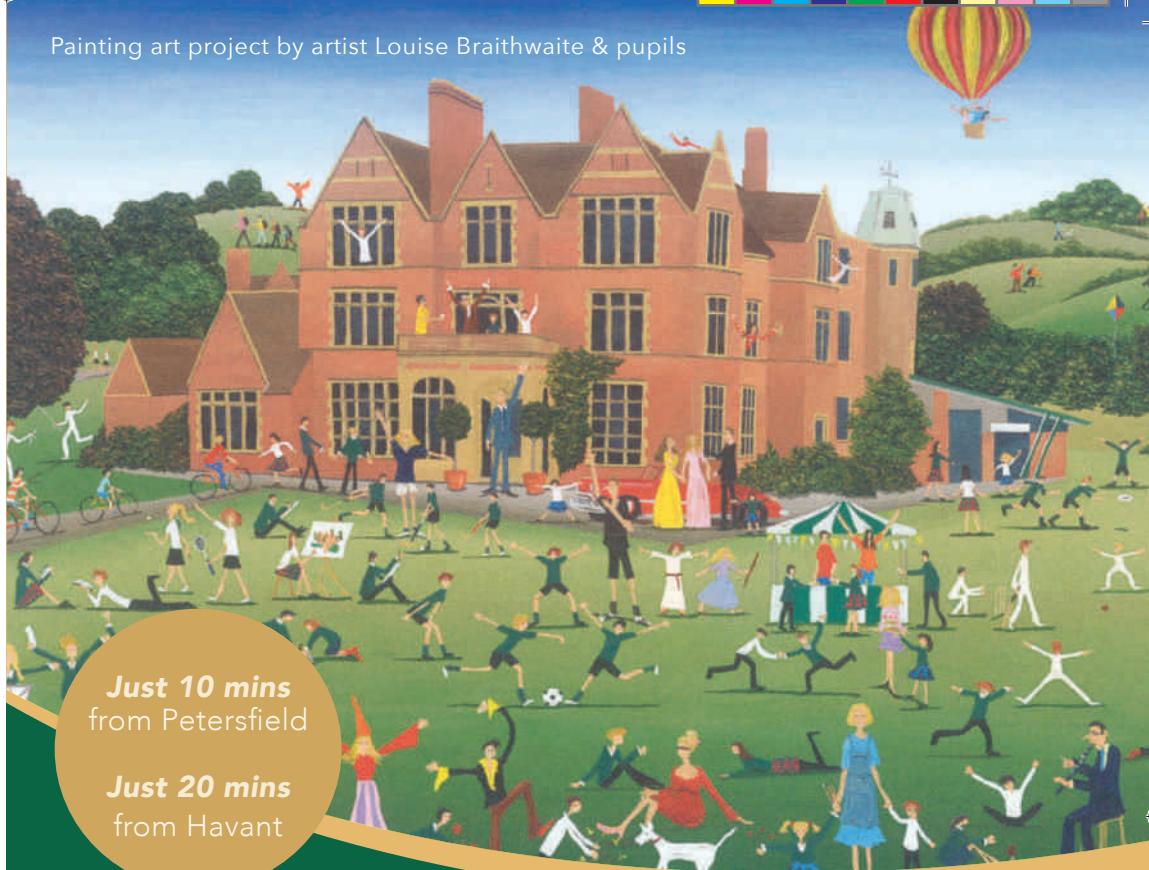
Non-members welcome at a cost of £5.00



*Photo / The Portsmouth Evening News / Mr Jennings Wood pointing at his paintings, exhibition held in December 1972*



Painting art project by artist Louise Braithwaite & pupils



**Just 10 mins**  
from Petersfield

**Just 20 mins**  
from Havant



# DITCHAM PARK SCHOOL

Excellence in education from 2<sup>1/2</sup> to 16 years  
in a stunning location on the South Downs.

Scholarships and Bursaries available.

Petersfield Hants GU31 5RN

Call us on: 01730 825 659 [www.ditchampark.com](http://www.ditchampark.com)

# WOMENS FELLOWSHIP IN ROWLANDS CASTLE

A group of very enthusiastic local ladies meet twice every month with the exception of August. We meet on the 1st and 3rd Tuesday afternoons between 2 and 4pm. at St John's Church Centre at the top of Redhill Road.

We always begin our meetings with a rousing hymn and continue with a programme of activities suggested by members - including games, quizzes, craft, debates, beetle-drives, What's My Line, also seasonal meals and some outings. We round off the afternoon with a cuppa and posh biscuits. We hold our AGM every November. Members will make you most welcome if you would like to join us.

Please contact Gill at St John's Church Centre Parish Office on 92410111

## ROWLANDS CASTLE RVS LUNCH CLUB Together for Older People

Rowlands Castle RVS Lunch Club continues to meet every Thursday in the Parish Hall.

It's a great way to socialize and meet old and new friends, catching up on each other's news and discussing many events (Very often how the world is changing!) We really do have a sociable time, sharing a meal together and our wonderful volunteers try to make it a special time for everyone.

Currently we are at maximum with 32 service users however if anyone would like to join us on Thursdays from 12:00pm to approx. 1:30pm (no rush to get away) we will try and find space for them as changes do occur regularly.

Wherever possible we offer to pick up and take home our service users who are no longer able to drive themselves. If you have some time to spare, maybe once a month or more, please contact us and we will guide you through joining the Royal Voluntary Service.

For more information please contact  
Carol Milford 02392 412321 or Sue Leonard 02392 412108

*Carol Milford RVS Volunteer Coordinator and Treasurer  
Sue Leonard Assistant RVS Volunteer Coordinator*

ROYAL  
VOLUNTARY  
SERVICE  
*Together for older people*

## READY FOR LUNCH

*Carol Milford*

*RVS Volunteer Coordinator and Treasurer*

*Sue Leonard*

*Assistant RVS Volunteer Coordinator*

Rowlands Castle RVS Lunch Club continues to meet weekly and after a period of finding a number of service users no longer able to join us for lunch, our numbers have again reached maximum with a regular attendance of between 25 and 31.

We are finding many of our members need extra care and with today's climate our volunteers have gone through various courses ensuring that we all comply with every aspect of care and the compliance required in our field of service, we thank all of volunteers for their dedication.

We are now planning our Christmas celebrations starting off with our Christmas Lunch Special on 12th December 2019 when we invite all our volunteers to join in the celebration with Christmas Fare and entertainment.

We can never have too many volunteers particularly drivers as more members require transport, so if anyone has a couple of hours a month to volunteer and join our team, please contact us.



# Protect your family's health

Our friendly and approachable GPs offer:

- ✓ Chicken Pox vaccination
- ✓ Comprehensive health checks
- ✓ Flu vaccination
- ✓ Corporate services



Call **01243 766 447** to arrange your appointment in Emsworth and Chichester.

[www.southdownsprivatehealthcare.co.uk](http://www.southdownsprivatehealthcare.co.uk)



**SOUTHDOWNS**  
PRIVATE HEALTH CARE

Making time for your health

# Independent private GP service



## Southdowns Healthplan

Offering you outstanding healthcare exactly when you need it.

18-40 years Plan	40-60 years Plan	60+ years Plan	Couples Plan	Family Plan
£35 <sub>pcm</sub>	£45 <sub>pcm</sub>	£57 <sub>pcm</sub>	£75 <sub>pcm</sub>	£99 <sub>pcm</sub>
<ul style="list-style-type: none"><li>• Free annual healthcheck • Free Flu Jab • Up to 10 GP appointments</li><li>• Free administration of prescriptions • Free administration of referrals</li><li>• Discounted prices on advanced health checks • Priority appointment booking</li><li>• Online access to your letters and results</li></ul>				

Visit [southdownsprivatehealthcare.co.uk](http://southdownsprivatehealthcare.co.uk)  
for more details and to join Healthplan today

97 Havant Road, Emsworth,  
Hampshire, PO10 7LF

The Boxgrove Clinic, The Street,  
Boxgrove, Chichester, PO18 0ES

Tel: 033 022 02000 | 01243 766447





# WELCOME TO REVEREND VICTORIA MORGAN

*Rev Vickie Morgan (Vicar) and Pam Ewing (Churchwarden)*

On Sunday 8th September Vickie was licenced by the Bishop of Portsmouth as Priest in Charge of Rowlands Castle, and Blendworth, Chalton & Idsworth .

Vickie writes:

"I am very excited about taking up this post and am looking forward to meeting you all.

Before training for ordination at Ripon College, Cuddesdon, I worked as a community nurse in Gosport where I grew up. I served my title post at St Faith's, Havant. I am also wife to David (Vicar of Soberton, Newtown & Hambledon) and mother to two boys, Jake and Freddie. When I am not busy in the parish I like to spend time with my family; I am also learning photography.

I am keen to get to know people in the village. I am a governor at St John's Primary School. I don't live

in Rowland's Castle (my home is the Vicarage in Hambledon), but you may see me in the coffee shop in the village so do come and introduce yourself."

Vicky will be in St. John's Church every Monday at 9am to lead Morning Prayer, so you could meet her there.

The Diocese is advertising for a 'House for Duty' post (someone who will work alongside Vicky for 3 days, including Sunday, a week and live in one of the Vicarages). Until this post is filled, Vicky will not be able to cover all the services in all her parishes, and our licenced Lay Readers or visiting clergy from the diocese will still need to cover some services.

## LOOKING FORWARD TO CHRISTMAS

These are our Advent / Christmas services:

**Sunday December 1st 10am – Messy Christingle**

**Sunday December 8th 3.30pm – In Loving Memory**

**Sunday December 22nd 6pm -Carols by Candlelight**

**Tuesday December 24th 6pm – Instant Nativity**

**Tuesday December 24th 11.30pm – Midnight**  
**Communion**

**Wednesday December 25th 10am – Christmas Day Celebration**

For details of everything going on at St John's, visit  
[www.saintjohnschurch.org.uk](http://www.saintjohnschurch.org.uk)



## 73 YEARS AND COUNTING

*President: Jane Pickering*

*rowlandscastlepres@hampshirewi.org.uk*

*Secretary: Cathy Craggs*

*rowlandscastlesec@hampshirewi.org.uk*

We are a lively and very friendly group of ladies who enjoy a wide variety of activities for all interests. We run theatre and cinema trips and visits to places of interest. We have reading and book clubs, a craft club and regularly take part in fun scrabble and local WI quizzes. Our monthly meetings are held in the Parish Hall and include a talk or demonstration and are a perfect opportunity to meet and make new friends.

Our major fund-raising event this summer was the Rowlands Castle Village Fair. Our Fairs & Shows committee surpassed themselves and we sold a great deal of produce and craft goods. Special mention must be made of the much loved 'Human Fruit Machine'



which again provided young and old with top class entertainment. We have also enjoyed two trips to Chichester Festival Theatre to see Oklahoma and Eight Hotels and a visit to the cinema to see Downton Abbey.

Some of our recent speakers have included Clive and Sue Fennell talking about the women who worked on the canals during WWII, Andy Thomas talking about River Conservation and the Wild Trout Trust and Philippa Joiner educating us on Healthy Eating and Nutrition. We are looking forward to a walk to Selborne and a trip to the Poppy Factory at Richmond.

If you would like to know more, come along to a meeting and enjoy a cup of tea/coffee or a glass of wine with us. We meet on the second Monday of each month (except August) at 7.30pm in the Parish Hall, Links Lane. Drop us an email if you've got any questions and/or to let us know you're coming along!



# GEORGE IDE <sup>LLP</sup> solicitors

Offices in Chichester, Guildford and London



Your leading law firm for:

- Wills & Probate
- Commercial Property & Business Services
- Family & Divorce
- Personal Injury & Clinical Negligence
- Residential Property
- Wealth Management

*Serving the community for over 50 years*

T: 01243 786 668 • E: [info@georgeide.co.uk](mailto:info@georgeide.co.uk)  
[www.georgeide.co.uk](http://www.georgeide.co.uk)

## LOOKING AHEAD

*Jace - Student Pastor*

Our last heading for this wonderful magazine was 'Summer is here again', now look, Autumn is upon us, wet weather, leaves falling and darker evenings setting in fast.

On a personal note, I was born in the Autumn and, as a child, I spent many a Birthday kicking around the leaves, picking the last of the blackberries, gathering in chestnuts and collecting conkers, so, when we used to get home, out came a skewer from the kitchen and a few old shoelaces and.....you know what's coming.....an evening of playing conkers with my parents and sister in front of the fire!

It's lovely that we can reminisce and have memories of years gone by, each memory special in their own right but a hymn springs to mind - 'There must be more than this' and, there is! Every tree, flower, animal and the human being, indeed, the whole of creation was made by God and when things were going from bad to worse, God in his infinite wisdom sent his son, Jesus, into the world to die on a cross, to save sinners, in which we all fall into this bracket but if we simply believe and trust in Him with all of our heart, then we will have our sins forgiven and one day, have everlasting life - Praise God!

First and foremost, we at Church on the Green would like to welcome each and every new person who have recently moved into the village of Rowlands Castle. We would love to see you at any of our Church services or weekly activities, where you would be sure of a warm welcome.

Apart from our Sunday morning service at 10.15am, Sunday school also being available, we have many weekly activities including, the Tuesday and

Wednesday coffee mornings from 10am - 12pm (small donations appreciated). There's also an exercise class on a Thursday morning (£4 per session) and a parents, carers and toddlers group called Music Makers on a Friday morning 10am - 11.30am, except for the last Friday in the month (£2.50 per child and 50p per extra child). Please do visit our website at [www.church-on-the-green.org.uk](http://www.church-on-the-green.org.uk) for further information.

Lastly, with Christmas only around the corner, our services include a 'Christmas Carol Service' on Sunday 22nd December, with warm drinks and a mince pie and 'Carols Over Coffee' on one of our coffee mornings nearer Christmas, so please do visit our website, look on our outside noticeboard and keep an eye on The Grapevine for more information, times and other activities in the coming weeks.

May we, at Church on the Green wish you all, a very happy and blessed Christmas and new year.

Take care and God bless.





## STAUNTON PARK REMEMBERS THE SIXPENNY 6

*Chris White MBE*

The Sixpenny Six were a group of 6 members of the local community who felt strongly about a proposed charge of 6d for entry to Leigh Park Gardens in 1969. This was a completely new charge bought in by Portsmouth City Council. Although this protest was a community effort the media focused on six particular members:

Mrs Betty Bell  
Mr George Bell  
Mr William Taylor  
Mr Barry Gardener  
Mr Harry Loizides  
Mr Les Humphreys

These six people would be subject to national press coverage, arrest, time in prison, hunger strikes and national government involvement. Because of its singularity this story made headline news and was broadcast alongside a major event happening at the same time...THE MOON LANDINGS.

On Sunday 13th July an advance party of 5 men ( George Bell, Barry Gardener, Les Humphreys, Harry Loizides and Bill Taylor ) went to the park and opened the large iron gates in a bid to allow 'Sunday Strollers' entry to the park without paying. They then staged a 'sit in'. Police arrived and forcibly removed them.

In the meantime, in Greywell Shopping centre Betty Bell JP had rallied more than 100 parents and children who then marched through the streets, gathering more support before arriving at the park. They were met by Police and security blocking the gates.

A few days after the 13th life having returned to normal, the families of the Six received a knock at the door. They were arrested by police on the 19th July and were summoned to the court by Petersfield

magistrates and charged under the Justice of the peace act 1361: an obscure law that was originally introduced to protect landowners from poor and starving peasants. They were asked if they would be " bound over" ( to admit a breach of the peace ) which they refused. The court had no choice but to send them to prison.

The group was remanded in custody and imprisoned, with the knowledge that the 1361ACT allowed for incarceration for a maximum term of 6 months.

Most of the Six were parents with young children but as no provision was made for the welfare of their children the families of the Six started a media campaign with the press.

### **Hunger Strike**

*19th to 22nd July*

The five men were taken to Winchester prison whilst Betty Bell was taken to Holloway prison in London. Once detained four of the men went on hunger strike, as did Betty.

Mr Loizides's wife Anne told the press that " they were being treated like criminals , and they are to be forcibly fed if it went on ". Sylvia the wife of Les Humphreys, stated, " they were confined for 22.5 hours a day ".

This treatment led to mass criticism by the press and the Secretary of State (James Callaghan) was appealed to investigate the handling of the matter. (James Callaghan was born in Copnor, Portsmouth in 1912.)

Following the imprisonment of the Six, Mr Callaghan ordered a full investigation and gave instructions that they be advised of their right to lodge an appeal against their sentences.

The case raised the issue of appropriate handcuff use by the police; a practice normally reserved for Category A prisoners convicted of the most serious crimes.

Lord Beswick (House of Lords Chief Whip) announced a Home Office investigation when questioned about the affair. In addition it raised the profile of " out-of-proportion " powers being used by Magistrates under the Justice of the Peace Act ( 1361 )



## Release from Jail

22nd July

Following intervention from the Home Secretary the Six were summoned to appear at an appeal hearing at the Winchester Great Hall on the 22nd July, having spent three days in prison. For the record they were transported in handcuffs.

The Six's lawyers had discovered a law called the 'General Jail Delivery', under the Statute of Finibus which was initiated in 1299 originally during the reign of Edward 1, it was rarely used but meant that the court could release certain detainees to free space in jails. The three judges, in full regalia, released the Six on the instructions of Her Majesty's Judge of Assize - Mr Justice Blain.

## The Sixpenny Six Picnic

On the Friday 12th July there was a gathering at the site of the old Manor house at Staunton Park to celebrate the 50th anniversary. There was a talk about the Six, attended by relatives of the Six, members of the public and, guest of honour Les Humphreys seen right.

I hope you find this as interesting as I did.



**FREED** ● The Sixpenny Six, from left, Harry Loizides, Mr and Mrs Bell, Bill Taylor, Barry Gardner and Les Humphreys

/ THE CENTRE SPREAD







## LITERARY PASSION IN OUR VILLAGE

Geoffrey John Jacobs

May I introduce myself as an author reaching out to lovers of short-stories.

Twelve years in the Royal Air force and twenty years a Management Consultant throughout the UK and abroad, found too many times when I really needed a travelling companion.

My contact with clients was fulfilling but then the times at hotels, restaurants, air and rail travel meant many odd hours, needing to be occupied.

I had taken books to read, to supplement magazines and newspapers. Then hotels, with TV programmes, hopefully in English, a passable evening meal, back to my room and open a book.

Could I settle to a lengthy story, more often than not, no, my mind soon wandered and the dedication of the novelist was unceremoniously returned, back into my open suitcase.

Like most people I still find myself with occasional spare time or waiting with uncertain delays. So if a full novel is not always appropriate, then what other option? Then it dawned on me.

How about a collection of short stories, with an average reading time of around, an hour per story?  
So I turned my ambitions

and time to becoming an author. From the outset I determined to make each short story unique, in every respect. It took a year to produce my novel titled "Your imagination's constant companion Vol 1".

This has been published on the 28th June 2019 by Austin Macauley. (London-New York-Sharjah).

So if waiting for, or in a train, plane, traffic jam, doctor's appointment, or at home with time to spare, then may I introduce you to this collection of nine short stories.

My hope is this novel will truly become your constant companion, to fill those available hours.



**YOUR IMAGINATION'S CONSTANT COMPANION VOL. 1**  
Geoffrey John Jacobs  
FICTION / Short Stories (single author)

<b>PB</b>	<b>£8.99</b>	<b>9781528922890</b>
<b>EB</b>	<b>£3.50</b>	<b>9781528963947</b>

*With seemingly endless demands of normal daily life, it is a real pleasure to escape, even if only for a few minutes. We can indulge in fanciful daydreaming, or we can allow ourselves to be taken to a special place, or in this collection, nine places. When escapism is sought but time for a lengthy story is an uncertain factor, then an intriguing journey, care of the author, into this collection of nine completely different stories is an exciting prospect. This collection promises you storylines that will surprise, shock, upset, cheer, confuse, intrigue, bewilder, disappoint, give hope and amuse.*

*Each story is so completely different, you will want to continue this constantly changing journey, at every opportunity. Welcome to the author's world. There is room for us all as our time together grows.*

Please send to: Austin Macauley, CGC-33-01, 25 Canada Square, Canary Wharf, London, E14 5LQ

Tel: +44 (0) 207 038 8212  
Fax: +44 (0) 207 038 8100  
order@austinmacauley.com  
www.austinmacauley.com

**AUSTIN MACAULEY PUBLISHERS™**  
LONDON • CAMBRIDGE • NEW YORK • SHARJAH



## / LOCAL TALENT

# DRIFTWOOD

*Scrumpy Bob  
Old Codger Magazine*

It was about eighteen months ago at The Havant Music Club which meets every month on the first Monday of the month at The Wheelwrights, Emsworth Road, Havant that I came across the duo 'Driftwood'.

Two friends who now live in Rowlands Castle who found they had a lot in common with music. They both play guitar and sing, and both had been writing songs for sometime and found once they started

playing music together, the ideas and team work came together. So I first saw them play as a duo and solo at the club, getting better every month, gaining more confidence, playing to more people, sorting out their mistakes, adding new songs.

Last December they did a Charity gig in Rowlands Castle, and appeared at the Hayling Island Acoustic Festival in July (Sunny Days), they did support in January at The Havant Ex Servicemen's Club and David and Gordon are the hosts of Octobers Havant Music Club - Driftwood and Friends, on Monday 7th October.

They will be playing two charity fund raisers in December plus they have been booked to play at The Spring Arts Centre on May 2nd 2020 from 1.00pm till 2.30pm in the Gallery Cafe, entry is free.



## KNOWING ME KNOWING YOU, AHA

Mary Jane Lomar

These words from the famous Abba song make me think of village life in Rowlands Castle, and how many residents I have made friends with over the years.

I ran a Nursery School in the 1960's, and helped my husband with his Motor Cruiser School with three Motor Cruisers at Hamble Yacht Marina.

I spent 20 years welcoming people to my Coffee Pot Cafe on the Green. The tradition of a cafe continues, run by Kate at the Bumblebee Cafe, ( Pop in and meet her). Kate was one of the first pupils at my Nursery and also became a great cook when working for me at the Coffee Pot Cafe.

Rowlands Home Hardware is the local wonder shop selling everything we need, if they dont have the item in stock they offer to see if it is available.

Over the years I have made many friends, and memories of my activities as a member of the Rowlands Castle Womens Institute run like a golden thread through my life.

By joining groups I learnt about village history since the days of the 'Castle'. and have written two books on the subject using information supplied by our historian Paul Marshman.

So lets explore the new parts of our village. Starting opposite the United Reform Church at the wide end of the Green we see Deerleap Lane leading to the well established Forest View Estate built by Bargate Homes. Yesterday as I was about to start this article a new comer to the village was looking at my Tea Towel of village Meeting Places displayed in my window, and she got a shock when I moved from my chair and came out to speak to her!

She is looking forward to moving into a house in the new development called The Glade, near where the famous Brickworks produced bricks since Roman times.

Finally using the entrance on the right of St Johns School we find Belway Homes Estate attractively designed, called Montague Green.

Lets make the new residents welcome by informing them of local events, making sure they receive this magazine and are aware of how much is available to them.

Also in return we need their help with village activities and volunteers are welcomed.

So village residents are looking forward to meeting you. Just open the RCA magazine and read all about it.





## VISIT OUR ACCLAIMED WORKING MODEL RAILWAY

Set in the centre of Rowlands castle, this scale model shows the troops, vehicles and trains as they were during the approach to D-Day in 1944.

On display at Stansted House  
Sun, Mon, Tues and Wed

1 - 4pm from Easter until the end of September

Admission is free, admission to Stansted House is extra

[www.rowlandscastleheritagecentre.org.uk](http://www.rowlandscastleheritagecentre.org.uk)  
[www.facebook.com/rowlandscastleheritagecentre](https://www.facebook.com/rowlandscastleheritagecentre)



## MacDonald Oates **LLP** SOLICITORS



### Leading Client Service

Residential Property  
Family Law  
Wills, Probate & Trusts  
Litigation & Dispute Resolution  
Employment Law  
Company & Commercial  
Commercial Property

Petersfield Office  
Tel: 01730 268211 | Fax: 01730 261232

Midhurst Office  
Tel: 01730 816711 | Fax: 01730 816016

[www.macdonaldoates.co.uk](http://www.macdonaldoates.co.uk)



## SEPTEMBER SKIES

*Tony Wright*

We always talk about the weather. It's said to be 'very English'... but also Irish, Scottish, Welsh and others too are perennially occupied. Clearly there is something about the patterns from day to day, season to season, decade to decade; something to draw our attention and stimulate commentary, another long hot summer, howling gales, humidity to cut with a knife, endless rain in all its forms. I've heard there are dozens of words describing types of rain from mizzle to drizzle to ordinary (though clearly there is no such thing as ordinary) to stair rods (which also seems to have lost its cultural link in these times of fitted carpet). And then there's even more words for snow ... that list goes on.

Perhaps the subtle shifts in accumulated averages since records began (only a few short decades ago compared to our race memory of extremes) cause our exclamations over the apparently extra-ordinary and we fret about climate shift when of course the nature of chaotic Nature is all about change. So perhaps we shouldn't worry? And yet shift and change are all defined by pace. We are startled by the daily transformation from steamy to torrents common in the tropics but exceptional in Rowland's Castle this summer.

Perhaps it is our apparently increasing usage rate of energy retained in the atmosphere that is driving our pattern of seasons to become more frenetic. Human history has faced slow spreading ice and flooding seas; fast change damages ecologies and ultimately us too. I would like my children and my children's children to enjoy a world not pushed by my extravagances into a heady imbalance. Hopefully our rich cultural histories will persist for a good while yet so I will continue to sort my rubbish, drive moderately and sparingly, be water wise and less carnivorous.





## ROWLANDS CASTLE SURGERY MACMILLAN CAKE SALE

*Janine Leake*  
Practice Manager

We held MacMillan cake sales over two mornings to coincide with our Saturday flu clinics this year. We would like to thank all our generous patients who made and purchased the cakes raising £486.00 for this excellent cause. This is our most successful fundraiser to date as so many patients said 'keep the change' or made donations.

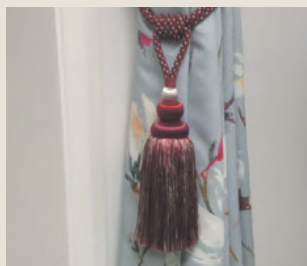
We work very closely with a Specialist MacMillan Nurse who is assigned to the Surgery to care for our patients when they are at their most vulnerable and support their families. This relationship between the Surgery

and MacMillan is invaluable and the care and support they give patients and our clinical team is excellent. Special thanks to Liz Longman, Di Stubbington and Gill Herbert for organising, providing cakes and giving up their time for the sale.

As winter is fast approaching don't forget to call the surgery and make an appointment if you are entitled to a free flu vaccination. Every year in December and January hospitals go on red or black alert because they are overrun with patients suffering from flu. You can help by making sure that you are vaccinated.



## *Elizabeth Turner Soft Furnishings*



A small, professional soft furnishings business, providing a bespoke service to meet our customers' exact requirements.

All of our products are hand-made to a very high standard. We also supply fabric, a range of curtain poles, tracks and other accessories.

Courtyard 4, Sindles Farm, Aldsworth, Emsworth PO10 8QS

**01243 389939**

**[info@elizabethturner.co.uk](mailto:info@elizabethturner.co.uk)**

**[www.elizabethturner.co.uk](http://www.elizabethturner.co.uk)**

## THANKS AND WELCOME TO NEW MEMBERS

*Ian Hewitt  
Chairman*

A few changes to Good Neighbours volunteers over the last few months. Very grateful thanks to David Hooper and Chris and Margaret Churchley who recently left the village and to Jenny Dolman, Sarah Hill and Valerie Coombe who have also stepped down.

Special thanks to Chris who remains on our committee and to Ian W who has joined it.

Thanks to our secretary's recent recruiting drive we welcome Linda, Stuart, Tim, Alan, Graham and Amanda as new volunteers. We hope they will join existing volunteers in finding it worthwhile and satisfying.

The pattern of lifts is changing too. Earlier this year 3 individuals each needed 2 surgery visits per week.

Now at least 3 individuals need one regular shopping/ social trip each week.

As a charitable organisation we don't charge but invite donations which volunteers may claim, based on mileage. Some clients donate more than requested and some volunteers don't claim mileage so we have a slight surplus over the year which we donate to a local village 'good cause'. This year we have made donations to repair the flagpole after storm damage. We still welcome new volunteers – so if you could spare a few hours each month, please phone the GN helpline on 0845 519 6641 to let us know.

If you need any help – or know of anyone who may do e.g. with:

- Transport to hospital, library, shopping or a social event
  - Collecting prescriptions
  - Any other neighbourly activity?
- then please remind them of our helpline – 0845 519 6641

Please give at least 48 hours notice but don't phone more than 2 weeks ahead.





# 2020 CALENDAR

**For Sale While Supplies Last!**



ROWLANDS CASTLE

2020

**ROWLANDS CASTLE VILLAGE CALENDAR**

*Photograph's taken by local residents*

**Sold exclusively by Home Hardware**

Home Delivery

homehardware

Also at: Bournemouth • Exmouth • Hildesheim  
• Plymouth • Romsey • Rowlands Castle

are.co.uk





## JUNE 2020

Monday	Tuesday	Wednesday	Thursday	Friday	Saturday	Sunday
1 Whit Monday	2	3	4	5	6	7 Trinity Sunday
8	9	10	11 Corpus Christi	12	13 Queens Birthday	14
15	16	17	18	19	20 June Solstice	21 Fathers Day
22	23	24	25	26	27	28
29	30					
		Notes			Stansted Cricket by Vince Lavender <a href="http://www.vlenderphotography.co.uk">www.vlenderphotography.co.uk</a>	

Serving your local needs for over 50 years.

# Merrid

Your local supplier for quality fencing materials at competitive prices.



- Lap and closeboard panels
- Concrete posts and gravel boards
- Close board fencing materials
- Post and rail
- Wooden pedestrian and fieldgates
- Full range of iron mongery and fittings
- Weldmesh and chainlink
- Installation available
- 40 years experience - free advice and quotes

☎ 02394 249741

☎ 07802 966338

✉ merridltd@aol.com

🌐 www.merridltd.co.uk

🏠 Station Yard, Bowes Hill,  
Rowlands Castle, PO9 6BP



Divorce, Mediation  
and Family Law  
Specialists  
Making separation manageable.

We are compassionate, professional and able to offer you a personal service to achieve the best possible outcome for you and your family.

Both Lisa and Kristy are trained mediators and collaborative lawyers so are able to offer non-court options. Your first consultation with us will always be at no charge - we believe that it is important that you have absolute confidence in our services before we work with you.

We are transparent about the costs you are likely to incur from the outset. There will be no hidden costs and we offer various payment plans.



Tel: 01243 373165 • Email: [info@lkfamilylaw.co.uk](mailto:info@lkfamilylaw.co.uk) • [www.lkfamilylaw.co.uk](http://www.lkfamilylaw.co.uk)

Fiscal House, Emsworth, Hampshire PO10 7JE



# Portsmouth High School

**G D S T**  
GIRLS' DAY SCHOOL TRUST

Where girls learn  
without limits

## Open Morning

Saturday 5 October  
9.00am to 12.30pm

Pre-School

Prep

Senior

Sixth

School minibuses  
run from  
Rowlands Castle  
village during  
term time



Register for Open Morning online at [www.portsmouthhigh.co.uk](http://www.portsmouthhigh.co.uk)

## LIVING A GREENER LIFE

*Emily Mott Duncannon*

*(Adapted from Sussex Green Living)*

The issue of climate change can seem overwhelming, but there are simple things you can do to both help the planet and your pocket. Here are actions you can take to reduce the effects of climate change, contribute towards a healthier planet and be part of the momentum of change.

- Clean renewable energy. Make the switch away from fossil fuels: [www.bigcleanswitch.org/sussexgreen/](http://www.bigcleanswitch.org/sussexgreen/)
- Reduce your energy use. Turn off lights and appliances, unplug devices when not in use. Use LED bulbs. Insulate and turn down heating.
- Get a smart meter through your energy provider.
- Avoid fast fashion. Repair, remake, adjust, make your clothes last.
- High efficiency appliances. Appliances with ENERGY STAR ratings typically utilise a minimum of 20 % less energy
- Ethical banking. Move your money from conventional banks who are investing your savings and pensions in fossil fuels and polluting industries. [www.moveyourmoney.org.uk/institution-types/ethical-banks/](http://www.moveyourmoney.org.uk/institution-types/ethical-banks/)
- Eat more vegetables and when you eat meat, choose local, grass fed, free range or wild.
- Review your transport. Walk or bike, use public transport or a carpool if you can. Consider

an electric car (powered with 100% renewable electricity)

- Write to your local MP and councillors about climate change and sustainability issues. Vote.
- Share your knowledge. Talk to your friends and colleagues and neighbours.
- Plant trees and celebrate life! Trees absorb carbon dioxide from the air and release oxygen, they provide homes for wildlife too.
- Water conservation. Shower rather than bath, turn off taps while cleaning teeth and shaving. Use rainwater butts for the garden.
- Reduce, Repair, Recycle and Refill. Clothes and food.
- Grow your own fruit and vegetables
- Staycation.
- Get a better idea of your carbon footprint. Use a carbon footprint calculator: <http://footprint.wwf.org.uk/>
- Support local businesses.
- Join a green local community group <http://www.transitionchichester.org/> Swap Shop and Repair Cafe. EcoChi -umbrella group for eco issues in the Chichester area, [www.http://ecochi.org.uk/](http://ecochi.org.uk/) [www.SouthEastClimateAlliance.co.uk](http://www.SouthEastClimateAlliance.co.uk)

This article has been adapted from the pages of Sussex Green Living. Further sources of help and reading can be found at [www.sussexgreenliving.co.uk](http://www.sussexgreenliving.co.uk)



## / SOUTH DOWNS

# NATIONAL PARK TRUST LOTTERY

South Downs National Park Trust is launching the South Downs Lottery, it's a fun way to support the conservation and enhancement of South Downs National Park and have a chance to win up to £25,000. Visit [www.southdownslottery.co.uk](http://www.southdownslottery.co.uk) or call 01730-631632 for more information.

Our first draw will be taking place on the 23rd November and will be celebrated with a special additional prize of a £300 voucher from our friends and Best of Brighton ([www.bestofbrighton.co.uk](http://www.bestofbrighton.co.uk)) towards a holiday cottage of your choice. This prize will be won by one of the ticket holders from our first draw!



By playing the lottery or supporting South Downs National Park Trust in any way - <https://www.southdownstrust.org.uk/how-to-give/> - you will be supporting the wildlife, landscape and communities of the National Park by helping us to deliver the following types of projects with our partners:

**Bee-Lines** - Improving habitat for bees, butterflies and other pollinators which are in decline by restoring chalk grassland and creating wildflower meadows. Visit <https://www.southdownstrust.org.uk/beelines/> for more information.

**Mend Our Way** - repairing the most damaged parts of the South Downs Way which is used by over 500,000 each year.

**School Travel Grant** - we support more children in accessing the learning environment of the National Park by providing travel grants to schools for educational visits to the National Park. Visit <https://learning.southdowns.gov.uk/learning/travel-grant/> for more information

**Volunteer Conservation Fund** - we work with the Volunteer Ranger Service to support voluntary groups that want to improve their local area by offering grants for things like tools, consumables and materials. Visit <https://www.southdownstrust.org.uk/vcf/> for more information.

**Sustainable Communities Fund** - we support communities that want to conserve and enhance the National Park's wildlife, cultural heritage and community cohesion by offering grants of up to £10,000.

Visit <https://www.southdownstrust.org.uk/scf/> for more information.

## IS LYING ON YOUR HIP TOO PAINFUL?

*Natalie March*

**Tips and exercises from Award Winning Physio, Natalie March from Physio-logical, a chartered physiotherapist based in Rowlands Castle and Havant**

We hope you found our last exercises for osteoarthritic knee pain useful. Today we will share with you some exercises and advice if you have hip pain, specifically trochanteric bursitis.

### **What is trochanteric bursitis?**

Trochanteric bursitis is a common hip complaint that causes pain and tenderness over the greater trochanter (outside point of the hip). It happens when the trochanteric bursa (fluid filled sac), located between the hip and the muscles and tendons of the outer thighs, becomes irritated or inflamed.

Trochanteric bursitis can be caused by:

- Activities involving twisting or fast joint movements, such as cycling or jogging
- Previous hip surgery
- Prolonged pressure on the bursa
- Overuse
- Trauma to the outer thigh muscles or tendons
- Poor posture

### **What are the symptoms of trochanteric bursitis?**

People with trochanteric bursitis may have a number of symptoms including:

- Pain on the outside of the hip and thigh
- Buttock pain
- Pain when lying on the affected side
- Pain that gets worse during activities such as walking, getting up from a low chair, getting out of a car, sitting with crossed legs or walking up stairs.
- Pain when pressing on the outside of the hip.

### **Treatment**

- Speak to your GP about appropriate pain control/anti-inflammatory medications if the pain is intense and/or affecting your sleep, driving, or ability to work.
- Reducing activities such as excessive walking or running for a short period may help to speed recovery
- Applying an ice pack (wrapped in a towel to protect your skin) for 10-20 minutes three times a day may help improve your symptoms.
- Physiotherapy exercises combined with massage and soft tissue release is the best treatment for trochanteric bursitis.

Please be aware of your body and take advice from your GP before exercising or send an email to ([enquiries@physio-logical.net](mailto:enquiries@physio-logical.net)) for advice and guidance. All these exercises should be pain free.

## Exercises for Trochanteric Bursitis

### Gluteal Strengthening - Hip Abduction

- Lie on your side with your back against the wall
- Squeeze your buttocks
- Keep your legs straight and lift your top leg up towards the ceiling, keeping your heel in contact with the wall behind you
- Make sure you do not let your leg come forwards
- Repeat until your muscles ache, 2 times a day



### Gluteal Strengthening - Hip Abduction

- Lie on your side on the floor with your legs together and knees bent
- Squeeze your buttocks
- Lift your top knee keeping your feet together.
- Make sure your hips do not roll back
- Repeat until your muscles ache, 2 times a day



If you are suffering from hip pain or any other aches or pains then please get in contact with us via [enquiries@physio-logical.net](mailto:enquiries@physio-logical.net), 07835 712306 or book online at [www.physio-logical.net/contact-us](http://www.physio-logical.net/contact-us) as we can help you with your aches or pains today.

*Here is a testimonial from one of our patients who had hip pain:* "I would like to thank the team for the excellent treatment I had on my hip after replacement hip surgery. I was still encountering a great deal of discomfort however with careful exercise and massage releasing all the tightness in the weaker soft tissue I can now walk and do 95% of the activities I did before which is amazing, I can't thank you all enough" Mrs. M

#### Newsletters:

If you would like to subscribe to our monthly newsletter where we share self help tips and exercises then please email us at [enquiries@physio-logical.net](mailto:enquiries@physio-logical.net)



BUILDING CONTRACTORS

COMMERCIAL, INDUSTRIAL and  
MAJOR DOMESTIC WORKS

Joinery Mill, The Green, Rowlands Castle,  
Hampshire. PO9 6BW

Tel 023 9241 2741  
[www.winnicott.co.uk](http://www.winnicott.co.uk)

*Established*  
**1904**

Fax 023 9241 2212  
[mail@winnicott.co.uk](mailto:mail@winnicott.co.uk)



**homehardware**

**Not just paint!**

**WE COVER EVERYTHING!**

- ✓ GREAT SAVINGS ON MANY RANGES
- ✓ FRIENDLY EXPERIENCED STAFF
- ✓ **OPEN SUNDAYS**

 **Dulux**  
PAINT MIXING CENTRES



[www.rowlandshomehardware.co.uk](http://www.rowlandshomehardware.co.uk)

 **Austens**

<b>Petworth</b>	<b>Alton</b>
Tel: 01798 342104	Tel: 01420 85115
<b>Billingshurst</b>	<b>Emsworth</b>
Tel: 01403 782963	Tel: 01243 376852
<b>Midhurst</b>	<b>Romsey</b>
Tel: 01730 815979	Tel: 01794 512141
	<b>Rowlands Castle</b>
	Tel: 02392 412332

**POST OFFICE**

**OPEN 7 DAYS A WEEK**



The logo for Nic Radcliffe is a blue oval with a gradient, containing the name "Nic Radcliffe" in a white, cursive script font.

*Nic Radcliffe*

**HEATING • PLUMBING • BATHROOMS**

I can help with all your boiler, heating, plumbing and bathroom needs.  
And I'm right here in the village, so can call round at short notice.

**Here's my number.  
Please keep it in a  
safe place.**

**07905 908143**

**[www.nicradcliffe.com](http://www.nicradcliffe.com)**

[nic@nicradcliffe.com](mailto:nic@nicradcliffe.com)



**City &  
Guilds**  
Qualified



## MORRIS BUILDING SERVICES

Shaun Morris

113 Finchdean Road, Rowlands Castle, Hants, PO9 6EN

RENOVATIONS  
ALTERATIONS  
SMALL WORKS

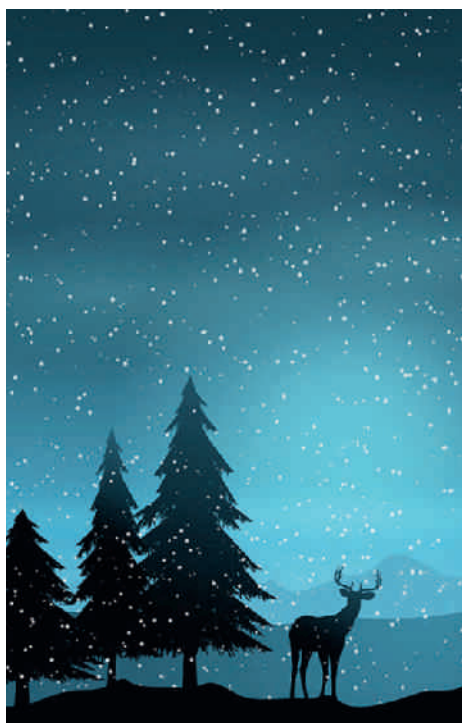
ALL ASPECTS OF PROPERTY MAINTENANCE AND  
REPAIRS, INTERNAL AND EXTERNAL

ROWLANDS CASTLE

(023) 9241 3130

FREE ESTIMATES

07941 742598



## FOUR DIMENSIONS

*Frank Philpot*

At the start of our Universe, energy was gathered by gravity until it became unstable and so exploded outwards as a ball of light, moving away from the big bang in all directions. Now light travels at a definite speed so the ball of light expands at 'c' the speed of light, which is about 300,000,000 metres per second.

Now it turns out that there are four dimensions of space, three are readily understood as being a right angles to one another and can be measured with a ruler. The fourth dimension is a little more tricky as it can not be seen but its presence is none the less needed to explain the other three. The fourth dimension is understood as time, without which everything would stop. Time is measured with a clock. Clocks are just adding machines, which add the number of cycles that a constant speed oscillator has made since the clock was set to zero.

To turn seconds into metres one has to have something moving at a constant velocity say 'c' in metres per second, then the distance travelled in metres has the same value as the time 't' taken in seconds. As we can not see the fourth dimension of space and 'c' is the fastest speed possible we measure distance in the fourth dimension as 'c' times 't' metres. Adjacent photons on the surface of the Universe appear as particles like electrons. Electrons are rotating about the time axis of space so they cause a dint in the surface that attracts other particles. This dint is an acceleration field that surrounds particles with Mass which is known to us as Gravity.

## CONTRIBUTE TO THIS MAGAZINE

All content for this magazine is provided by readers like you and new contributions are most welcome.

### CONTRIBUTION GUIDELINES

This magazine is published three times a year by the RCA. The aims of the RCA are to act as a channel of communication for the village, to conserve its character and to enhance the life of its residents.

Contributions for publishing are welcomed however, please note that all materials should be submitted by the following dates:

**SPRING issue: 18th March**

**SUMMER issue: 18th June**

**AUTUMN issue: 18th October**

**Please see page 4 for contribution guidelines.**

#### PLEASE NOTE:

*Due to printing deadlines, late submissions might not be considered for publication.*

Send your contribution to:  
[editor@rowlandscastle.com](mailto:editor@rowlandscastle.com)

## RC CRICKET CLUB EARLY SEASON REPORT

*Jonathan Law*  
*DACD (Rowlands Castle) CC*

After a mixed start to the season July started with a last ball 1 run loss to Sweaters. The tide then turned with a run of 4 consecutive midweek wins as the month progressed. A comprehensive win by 8 wickets against Raymarine at Hollybank was followed by a perfectly time run chase to beat Skulking Loafers by 6 wickets in the final over.

Next came DSTL on the artificial strip at Southwick Park where another perfectly timed run chase took us to a 5 wicket win again in the 20th over.

The final game of this winning streak saw MCC restricted to 78-7 as they chased 132 to win showing that DACD could set a winning score rather than

always chasing one down. The run of victories were highlighted by good all round performances with contributions throughout the team.

August started with a loss to Droxford but followed by a return to winning way against Wallington. An unbeaten 50 from Alex Andrews anchored a total of 174-5 off 35 overs before 4 wickets for spinner Dave Richardson restricted Wallington to 102 all out. The final midweek game was lost to the Izaak Lions at East Meon as we were unable to defend a decent total of 141-6.

The final Sunday game at the Rec against Bishops Waltham featured Alex Andrews with a seasons best of 75 and Owen Hughes with 49 no takes us within 8 runs of victory as we fell agonisingly short of the 190 run target.

The traditional season ender against Lavant was an honourable draw. After bowling out Lavant for 175 DACD could only reach 144-5 before the clock ran out.

Season Playing Record P 16 W 8 L 7 D 1



## LIFE AT RCGC

*Peter Klepacz the clubs PGA Professional*

The summer of 2019 was a busy time for us all here at the golf club with lots of golfing and social events enjoyed by both members and visitors from across the area.

We have also seen change, as the members said good bye to our excellent secretary/manager Keith Fisher who retired after 27 years of service and we welcomed Shah Bani-Sadr as our new general manager. Shah I know is very keen to get the golf club more involved in the community and is looking forward to meeting many of the local residents.

The Club's signature event is the Dupree Trophy, an open event played over 3 days in August. Competitors came from as far afield as Derbyshire and Spain to try and qualify for the knockout stages. This year's event was won, after 90 holes of golf, by Kevin Hickman from neighbouring club Hayling G.C. The Club Championship is our other marquee event, with the best golfers in the club competing for the title of champion golfer. This men's championship was won by +3 handicapper Tom Robson with the ladies event being won by Diana Littler.

Throughout the season we have a variety of trophies which are competed for by all sections of the club. These take a variety of forms, with the winners of these receiving their trophies at our Quaifers presentation in October. With the winter drawing in, the competitions take a more informal and fun approach, and with Christmas fast approaching we have lots of events planned both on and off the course.

The club were also very proud to host two large professional events this year. Firstly in May we

hosted one of the largest Pro-Am events in the South and then in October we hosted the prestigious tour championship of the regional PGA dubbed the 'Race to Rowlands'. This was won by Mark Sawford, who is a former Rowlands Castle junior member and now professional, who stills lives in the village.

The club has an active and developing junior section, who play in many internal competitions, with the emphasis on participation and enjoyment. A lot of children from the village have enjoyed the junior taster sessions and summer camps. These are continuing throughout the winter and details for these can be found on our website.

This summer, in my role as club professional, I have hosted a number of free taster sessions where over 100 people have sampled the game. I am pleased with how many have now gone on to become regular golfers. If you are keen to give golf a try, myself and my staff are available for lessons, starting at £15 each during off peak times. These are available to everyone and not just members. Lesson vouchers also make great Christmas presents.

On the subject of Christmas, the club also have a large well stocked golf shop, which I run with my son Jimmy and we have everything in stock that a golfer would need, from clothing, tees and accessories to the latest clubs from the biggest manufacturers. If you are in need of a golfing gift, pop in and see us, and we will be on hand to give you all the necessary help and advice.

If you live in the village and have never been to the club, why not pop in and see us? We would be happy to show you around our facilities. If you would like any more information on golf, lessons or the shop, then I can be contacted on 02392 412785, or my website is [www.peterklepaczgolfshop.com](http://www.peterklepaczgolfshop.com). For more information on memberships and using the club facilities Shah Bani-Sadr the clubs general manager can be contacted on 02392 412784, or by emailing [manager@rowlandscastlegc.co.uk](mailto:manager@rowlandscastlegc.co.uk)





## HELEN'S AIRPORT CARS

"With US it can often cost less  
than rail or airport parking"

Saloons  
MPVs  
Estates  
4-8 seaters



Reliable  
Affordable &  
Comfortable  
Pre-booked  
24hr



**01243-820820**

Book Online  
Now [www.airporttaxi.co.uk](http://www.airporttaxi.co.uk)

We have a driver near you! **01243-780999**



**Health Coach**

**Helping you to  
help yourself**

Stress, anxiety, trauma  
Female intimate health  
Chronic health conditions  
All inter-related affecting  
many aspects of your life.  
Can be fixable!

Susan Cowe Miller 07917 680967  
Rowlands Castle 02392 410090

EFT, Matrix Reimprinting,  
Lifestyle Prescriptions,  
Counselling, Reiki

[www.hampshire-eft.co.uk](http://www.hampshire-eft.co.uk)  
[susan@hampshire-eft.co.uk](mailto:susan@hampshire-eft.co.uk)



visit us to  
find out more  
[waterloovillecarpets.co.uk](http://waterloovillecarpets.co.uk)

fabulous  
flooring  
with a  
perfect fit!

Service is the secret of satisfied customers and satisfied customers are the secret of our 52 year success.

- Fabulous Carpets from Greendale, Brintons and Ulster
- Crucial Trading/Alternative Flooring Specialist
- Fabulous Vinyl Tiles from Amtico, Karndean and Vusta
- New Click only Vinyl Planks and Tiles from Karndean
- Fabulous Quickstep Laminate Flooring
- Oak Floors – Engineered Planks and Solid Click
- Fabulous Bamboo & Unnatural Flooring
- Supersoft Carpets in Twist & Saxony Pile



We promise you a flooring that fits your requirements, fits your budget and fits beautifully into your home. Please call in, anytime.

**A pleasure to come home to.....**

31 The Square, Petersfield, Hampshire Telephone: 01730 262223/267381 Fax: 01730 267394  
email: [sales@waterloovillecarpets.co.uk](mailto:sales@waterloovillecarpets.co.uk) [waterloovillecarpets.co.uk](http://waterloovillecarpets.co.uk)

## MB Painting & Decorating Ltd

*'Providing an honest, friendly & professional bespoke service'*

- Internal and external repair, renovation, painting and decorating
- Wallpapering, tiling and laminate floor installation
- Plastering/skinning, stud walls & plasterboard work
- Call Mathew for a free no obligation quote



: 07340 111109



: mat@mbpaintinganddecorating.co.uk



: mbpaintingdec



: MB Painting & Decorating



## CLASSES @ THE STUDIO ROWLANDS CASTLE

- **POSTURE PILATES:** *to re-balance the body by improving posture, muscle tone, flexibility and core stability*
- **YOGA FLOW & FITNESS STYLE YOGA:**  
*Working with postures, pranayama and relaxation.*
- **BARRECONCEPT:** – *a Ballet Barre all body workout, stretches and tones muscle whilst burns fat.*

Day/Evening Class throughout the week. Small friendly classes held in a private local studio.



[www.balancefit.studio](http://www.balancefit.studio)

Contact: [stacey@balancefit.studio](mailto:stacey@balancefit.studio)

07957 215459

Register  
of  
Exercise  
Professionals





## GREAT DAYS OUT

### ORLA KIELY: A LIFE IN PATTERN EXHIBITION

12 Oct 2019 - 5 Jan 2020

The Gallery  
Winchester Discovery Centre, Jewry Street  
Winchester  
SO23 8SB

Free entry

Orla Kiely is one of the UK and Ireland's most successful fashion and lifestyle designers. Her stylised plant based patterns are innovative, influential and instantly recognisable. With enchanting applications, her flat, graphic style and choice of colour palette resonate with a nostalgia for vintage style and interiors.

Inspired by the upbeat exuberance of the 1960s, a love of Irish and Scandinavian architecture and mid-century design, Kiely's designs have grown from humble beginnings in the 1990s to become a global phenomenon.

Holding an audience in thrall to the rhythms and repeats of her designs, this exhibition explores Kiely's creative output and the power of decoration to transform the way we feel.

The display will include carefully selected key pieces from the exhibition, originally organised and presented at The Fashion and Textile Museum, London - including the 'handbag wall'. With unique access to company archives, we delve into the designer's world and feature an array of her iconic designs.



### HEALTH & WELLBEING DAY WITH CHRISTMAS FAYRE AT HTC

Sat 9th November 2019, 10.30 to 3.30pm

Barton Hall at Horndean Technology College

There will be over 50 stalls plus entertainment. Only £1 entry, with under 16s free. If you pre-register online that you are coming along, receive a free raffle ticket on the day!

Stalls include a range of local businesses, health, beauty, therapies, arts, crafts, gifts and treatments.

Start your Christmas shopping, pick up something unique and special for your loved ones.

Plus refreshments, home made cakes, raffle and free parking!

---

### FLEABAG EVENT CINEMA

15 November  
The Spring, Havant

Tickets online and at The Spring box office.

See the hilarious, award-winning, one-woman show that inspired the BBC's hit TV series Fleabag, broadcast live to cinemas from London's West End.

Written and performed by Phoebe Waller-Bridge (Fleabag, Killing Eve) and directed by Vicky Jones, Fleabag is a rip-roaring look at some sort of woman living her sort of life.

<http://thespring.co.uk/whats-on/event-cinema/nt-live-encore-fleabag/>



This listing is provided as a community service. The editor, RCA committee and associates accept no responsibility for any changes, cancellations or inaccurate information. You are advised to always check an events status before attending.

## STANSTED CHRISTMAS FAYRE

21, 22, 23 & 24 November

Come and soak up the traditional festive atmosphere at Stansted House this Christmas.

With a wide range of gifts to provide inspiration for everyone and festive entertainment, you'll find everything you need to make this Christmas a magical one.

Adult/Senior £8 (under 16 yrs free)

<http://www.stanstedpark.co.uk/christmas-fayre>

Please be advised that pushchairs are not permitted in Stansted House. No dogs except those needed to assist.



## SOUTHERN CERAMIC GROUP

23 November - 19 January  
Winchester Discovery Centre  
Jewry Street  
Winchester  
SO23 8SB

Over 500 pieces by  
50 potters on  
display and for sale!

Mon - Fri :10am - 7pm  
Sat: 10am - 5pm  
Sun: 11am - 3pm



## ECO FAIR

Gilbert White's House, Selborne, GU34 3JH

23 November 10:30 - 16:00

The inaugural Eco Fair at Gilbert White's. Our Eco Fair is a great opportunity to discover a wide range of local green groups, businesses and campaigns. With planet friendly workshops, stalls, gifts and food. Gilbert White was a pioneering naturalist and gardener who focused on the natural world around him.

As a site we focus on ecology and the natural world around us we want to offer you the chance to explore how you can make simple changes in your lives live in a more environmentally and ethical way. "Gilbert White's book, more than any other, has shaped our everyday view of the relations between humans and nature." Richard Mabey, Naturalist & biographer of Gilbert White.

The Eco Fair offers a great way to be a part of and develop a sustainable society, as well as a place to buy eco and sustainable Christmas gifts.

## CHEESE & WINE NIGHT

Hambledon Vineyard, East Street, Hambledon Vineyard,  
East Street, Waterlooville, Hampshire, PO7 4RY

24 January  
18:30

A chance to try the sparkling wines that Hambledon has to offer paired with the finest local cheeses.

Wine and cheese are two of life's great culinary pleasures, and finding the perfect match can be a delicious endeavor. As with any wine and food pairing, there are a number of considerations, such as texture, acidity, fat and tannin. Our team will guide you through finding and matching our three English sparkling wines to local cheeses.

/ FURTHER AFIELD

## GREAT DAYS OUT

*Continued...*

### VICTORIAN CHRISTMAS AT OSBORNE

Osborne House, York Avenue, East Cowes, Isle of Wight,  
PO32 6JX

**30 November - 1 December**  
**11:00 - 19:00**

This December, take a trip back in time at beautiful Osborne and delight in a celebration of the perfect Victorian Christmas.

Surround yourself with good cheer as the sound of music and the smell of roasting chestnuts fills the air. Be captivated by Victorian toy makers as your children make toys of their very own to take home. Have a go at traditional games, take a ride on the carousel and marvel at daring jesters and their breath-taking fire shows.

After the excitement of our outdoor entertainments, head indoors, for Osborne will become Father Christmas' home-away-from-home for the entire weekend. Join in an audience with the man himself, as he tells yuletide tales amidst the festive decorations of Osborne's spectacular ground floor rooms.

Warm up with a tippie from our Christmas courtyard and choose the perfect gift from our stallholders. Grab a song sheet and sing carols as snowflakes drift in the breeze. A fast paced and humorous retelling of Dickens' A Christmas Carol will have you laughing out loud, or huddle round to enjoy the Victorian tradition of Christmas ghost stories.

Victorian Christmas continues after dark as the festivities carry on into the evening. Gather to watch Father Christmas throw the switch on our festive lights, then gain a new perspective on the beauty of Osborne as you sip mulled wine and wander among the softly lit grounds.

Price includes entry to the event plus entry to the house and grounds. Purchase your tickets online via the English Heritage website, or by calling the English Heritage Ticket Sales Team on 0370 333 1183 (Mon - Fri 8.30am - 5.30 Sat 9am - 5pm).

### MOSCOW CITY BALLET SLEEPING BEAUTY

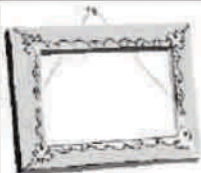
Chichester Festival Theatre, Oaklands Park, Chichester,  
West Sussex, PO19 6AP

**2 - 5 January**  
**11:00 - 19:00**

Moscow City Ballet return to Chichester with their stunning production of *The Sleeping Beauty*: an unmissable climax to the festive season, presented in classic Russian style with full orchestra.

The enchanting and romantic story of Princess Aurora, wicked Carabosse, the Lilac Fairy and an array of fairytale characters, is set to Tchaikovsky's glorious score. This truly magical production showcases the company's dramatic and lyrical talents.





## Petersfield Framing Studios

**Picture Framing by  
Andy Parks, MA, G.C.F.**

- ◆ Collection and Delivery Service in the Rowlands Castle area.
- ◆ Guild Commended Framer (G.C.F.) with 23 years experience.
- ◆ Over 400 different mouldings and 200 mount boards to choose from.
- ◆ Very competitive prices.
- ◆ Picture framing tuition also available.
- ◆ Tel: 01730 269926.
- ◆ Visit: [www.petersfieldframing.co.uk](http://www.petersfieldframing.co.uk)

***"We Collect and Deliver Your  
Picture Framing"***

**microsomma**



**IT Support for Home  
& Small Business**  
**[www.microsomma.com](http://www.microsomma.com)**

**David A. J. Somma BSc**  
**Computer Systems Engineer**

**Reliable & Local**

**Available 7 Days**

**Qualified & Experienced**

**0845 0170772**

**07796 346526**

**[david@microsomma.com](mailto:david@microsomma.com)**



*Season's  
greetings,  
happy  
holidays  
and best  
wishes  
for the  
new year*

# SOUTHERN MOWER SERVICES

New and used lawn mowers, strimmers, hedge trimmers, chain saws, ride on mowers, leaf blowers and more



HAYTER



STIHL®



**Our highest priority is service to our customers**

**Sales | Repairs | Service | Parts**

Unit 4 Hillside Industrial Estate, London Road, Horndean, Hampshire PO8 0BL

**Tel: 02392 592954**

**Email: [info@southernmowerservices.co.uk](mailto:info@southernmowerservices.co.uk)**

**[www.southernmowerservices.co.uk](http://www.southernmowerservices.co.uk)**



# Burchett Decorators

- Domestic, Commercial & Insurance Work
- 22 Years Experience
- All Types of Decorating including Wallpapering, Coving & Carpentry
- Fully Insured
- Clean, Tidy & Friendly Service

Ring for FREE Estimate  
or Just Helpful Advice

07866 691 984  
023 9241 3548

Email: [Burchett.davis@btinternet.com](mailto:Burchett.davis@btinternet.com)

“Keith was friendly, reliable and worked exactly as he promised to, neat, tidy and very personable”

Customer, Stedham, 2012

**Checkatrade.com**  
Where reputation matters

10/10

Member for 8 years

Burchett Decorators, Finchdean, Nr. Rowlands Castle, Hampshire

## N • K • S Building & Landscapes

Drives • Patios

Stonework • Drainage

Garden Walls • Building Maintenance

Alterations and Renovations

Free Estimates

**Nigel Sykes**

023 9241 0118

07788 126 547

Please keep this leaflet in a safe place  
for when you need my services.

## Pilates



Rowlands Castle  
Parish Hall

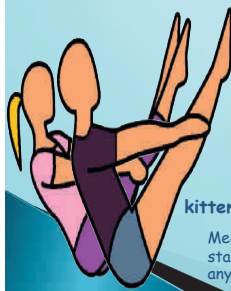
Wednesdays 7 – 8 pm

### WHAT CAN PILATES DO FOR ME?

**Develops:** Long, lean muscles & core strength

**Promotes:** Strong & flexible spine, health and well-being

**Benefits:** Improved Posture, Balance, Mobility & Muscle tone



Small, Friendly, Mixed-Ability Classes

Contact Erica for further  
information

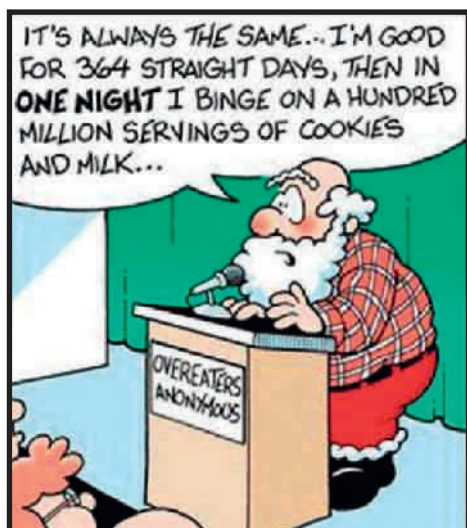
Tel 07538 077619

or

[kittenpower90210-pilates@yahoo.co.uk](mailto:kittenpower90210-pilates@yahoo.co.uk)

Medical advice should be sought before  
starting any form of exercise if you have  
any existing medical condition or injury

## THE LAST LAUGH



### ADVERTISE IN THIS MAGAZINE

This magazine is funded entirely by advertising. If you would like to promote your business or services and advertise on these pages please contact Mark Dombey on the address below: [ads@rowlandscastle.com](mailto:ads@rowlandscastle.com)

THANK YOU TO OUR SPONSORS FOR THEIR SUPPORT

THANK  
YOU!

## / NUMBERS TO KNOW

### WHAT WHERE HOW WHEN

EMERGENCY	999
NON EMERGENCY POLICE	101
NON EMERGENCY MEDICAL	111
ELECTRIC POWER CUT	105
GAS EMERGENCY	0800 111 999

#### Rowlands Castle Pharmacy

12 The Green  
Rowlands Castle  
PO9 6BN  
T 02392 413952

#### Rowlands Castle Surgery

12 The Green  
Rowlands Castle  
Hampshire  
PO9 6BN  
T 02392412846

#### Practice in the Park (Dentist)

4 Basing Road  
Leigh Park  
Havant  
Hants  
PO9 5AG  
T 02392 486660

#### Recycling Centres

Location: **Behind Castle Inn, Rowlands Castle**  
Waste Accepted: Glass, Textiles  
Location: **Household Waste Recycling Centre, Harts Farm Way, Havant, PO9 1HS**  
Waste Accepted: Go to [www.hants.gov.uk](http://www.hants.gov.uk) for full details or call 0300 555 1389

# THE ROWLANDS CASTLE ASSOCIATION

*Martha Dombey*

## The Rowlands Castle Website

The Rowlands Castle website has been running for some years now and is moderated by the Rowlands Castle Association. Here you will find information about all aspects of the village from the churches and shops to the various clubs and points of interest. We welcome photographs about the village and the events held in the village that we can post on the website. This is the link to the Rowlands Castle Website [www.rowlandscastle.com](http://www.rowlandscastle.com)

The website is currently being updated and if you have any up to date information or changes to add please email: - [webmaster@rowlandscastle.com](mailto:webmaster@rowlandscastle.com)

## The Grapevine

The Grapevine email system is run by the Rowlands Castle Association committee. It is a channel of communication for the village of Rowlands Castle. It is an automated system and is moderated by two members of the committee to make sure that the items posted are of value and interest to the villagers. The Grapevine posts important notices, messages, events and news. Items of a commercial or fundraising nature are not accepted. There are approximately 600 villagers that view or post on the RCA Grapevine. To date many villagers have found this to be a reliable and useful tool for reminders of events around the village.

To find out how to receive Grapevine postings go to this link: [www.rowlandscastle.com](http://www.rowlandscastle.com)

## The Rowlands Castle Facebook page

The Rowlands Castle Facebook page is run by members of the committee and anyone can send in articles, events, news and photographs to be moderated and posted by the RCA. The RCA would appreciate any new photos of the village, so please send them by private message so they can be moderated and added. One of the highest numbers of audience hits to this page happened in March 2018 when we posted a picture of the snow at St. Huberts church. The photograph was taken by the RCA Magazine Editor Kelvin Shafli and received 2.6 thousand views in one day!

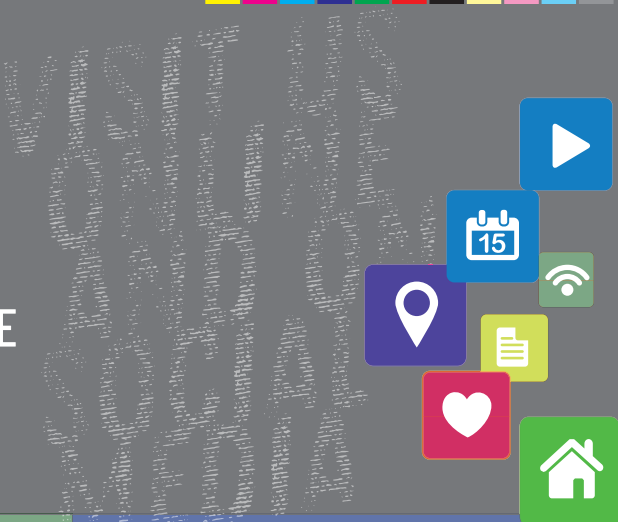
RCA Facebook page: [@rowlandscastleassociation](https://www.facebook.com/rowlandscastleassociation)



## The Village Noticeboard

The Rowlands Castle Association notice board has recently been renewed and is located outside the Londis shop in the village. Here the RCA post notices about events that they organise, the May Day Picnic on the Green, annual fundraising Quiz Night, Fireworks event and Rowlands Castle Children's Christmas Party. The minutes of the committee meetings are also posted here for everyone to view.

To contact the RCA about anything go to: [www.rowlandscastle.com](http://www.rowlandscastle.com)



ENVIRONMENTAL HEALTH IN  
AND AROUND THE VILLAGE

# DOG FOULING SCOOP IT, BAG IT, BIN IT

## THE LAW

**A dog owner or walker must remove their dog's mess from land used by the public. If you don't do this, you may be given a fixed penalty fine of £50 by a dog warden or other council officer. You may also be prosecuted and fined up to £1,000. Responsible dog ownership means always taking a scoop or bags with you, and disposing of any mess in bins provided.**

## REPORTING

**Report dog fouling online or call  
Animal Welfare on 01730 234319.  
[www.easthants.gov.uk](http://www.easthants.gov.uk)**

This notice is provided as a public service announcement.

Content sourced from East Hampshire District Council



## / NUMBERS TO KNOW

continued

### Havant Library

T 0300 555 1387 9.30 - 5pm, Monday to Saturday

### East Hants District Council

T 01730 266551, 9am to 5pm, Monday to Friday.

### Hampshire County Council,

T 0300 555 1375

Use [www.hants.gov.uk/aboutthecouncil/contact](http://www.hants.gov.uk/aboutthecouncil/contact) for a list of relevant numbers.

Open 8:30am to 5pm

### Rowlands Castle Parish Council

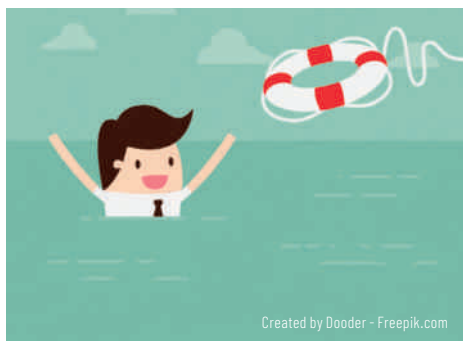
The Parish Office is open to the public between 10am and on 12 Noon on Tuesdays and Thursdays, and at other times by appointment.

Rowlands Castle Parish Council,  
11 The Green, Rowlands Castle, Hampshire  
PO9 6BW.

T 02392 413044

E [clerk@rowlandscastlepc.org.uk](mailto:clerk@rowlandscastlepc.org.uk)

W [www.rowlandscastlepc.org.uk](http://www.rowlandscastlepc.org.uk)



Created by Dooder - Freepik.com



# MARTIN STEELS LTD

INDEPENDENT OPTOMETRISTS & CONTACT LENS PRACTITIONERS

THE PLACE FOR TRUSTED,  
COMPETENT EYECARE

*Maui Jim*

**R**  
RODENSTOCK

**optos**

FACE A FACE  
PARIS

*Silhouette*  
AUTHENTIC FV-WEAR SINCE 1984

LINDBERG

**adidas**

4 The Old Flour Mill, Emsworth  
01243 375 141

[www.martinsteels.com](http://www.martinsteels.com)

Monday – Friday: 9.00am to 5.30pm  
Saturday: 9.00am to 1.00pm





THE  
PORTSMOUTH  
GRAMMAR  
SCHOOL



# JOIN US

## Open Morning

**Saturday 28th September 2019**  
**9:30am - 12:30pm**

**Nursery | Infant | Junior | Senior | Sixth Form**

**023 9236 0036 | [www.pgs.org.uk](http://www.pgs.org.uk)**